

Empowering Chinese business in Europe

From
East to West





Your trusted partner for European e-commerce expansion

In Europe, GLP is supporting Chinese crossborder e-commerce companies with their growth plans

We have successfully leased almost 400,000 sq m to Chinese crossborder e-commerce businesses. We are helping a wide variety of businesses from different sectors establish new logistics and fulfilment operations in key European locations.

Our teams assist customers from all over the world to find smart, efficient logistics real estate to support their business growth. We offer best-in-class buildings built to the highest construction and environmental standards which are strategically located close to transport hubs enabling crossborder e-commerce logistics and fulfilment operations.



Magna Park Lutterworth is Europe's largest dedicated logistics and distribution park

Success stories

01. G-Park Northampton — UK

In August 2020, SF Express — a Chinese multinational delivery service and logistics company, leased an 8,361 sq m unit from GLP at G-Park Northampton. SF Express's first UK Distribution Centre forms part of their expanding overseas supply chain strategy.

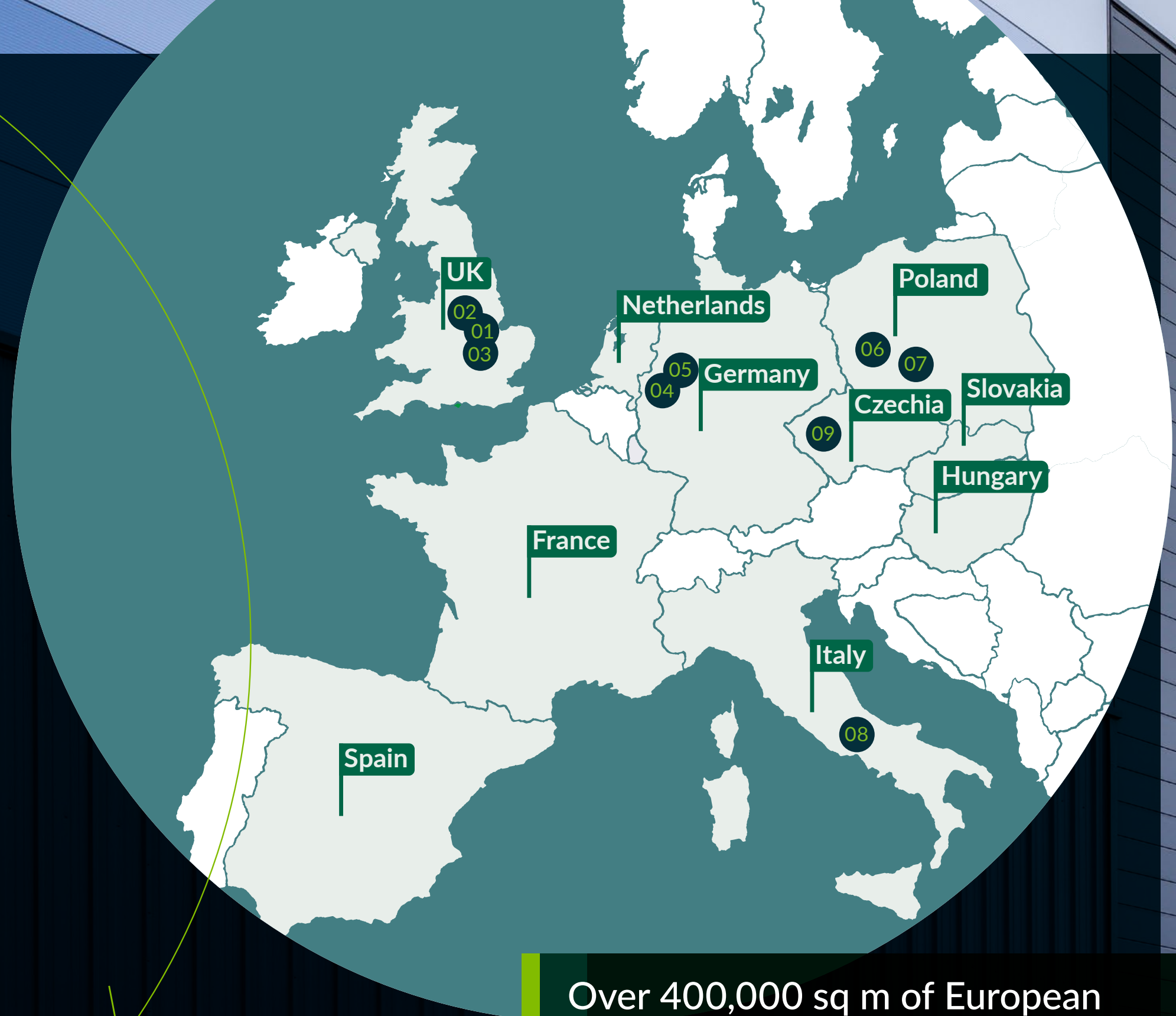
02. Magna Park South, Lutterworth — UK

In 2021, GLP leased c11,706 sq m to JD.com, one of the largest Chinese e-commerce companies at Magna Park South, Lutterworth.

03. G-Park Bedford Wixams — UK


In the same year, GLP leased three buildings, totalling over 49,238 sq m at G-Park Bedford Wixams to MH Star, an e-commerce company specialising in home and outdoor living products.

continued →



Success stories

04. GLP Mönchengladbach

Regioparkring logistics centre — GERMANY 

In February 2025, Goodcang (Zongteng Group) Logistics agreed to lease four units at GLP Mönchengladbach Regioparkring logistics centre in Germany, covering a combined area of approximately 65,000 sq m.

Goodcang Logistics (soon to be rebranded as Cirro Logistics) is a brand of Zongteng, one of the fastest growing Chinese crossborder e-commerce service providers, supporting both the Shein and Temu businesses in Europe.

Goodcang plans to use the units to expand its integrated overseas logistics and fulfilment operations in Germany. Goodcang was already renting two units in the building and the additional units provide a total area of approximately 98,000 sq m, making this one of the largest lettings of the year in Germany.

continued →



Success stories

05. Duisburg-West Logistics Centre – GERMANY

In September 2021, Aukey, an international retailer of consumer electronics and computer equipment, agreed to lease a 40,000 sq m logistics facility in Moers, near Duisburg in Germany.

The Duisburg-West Logistics Centre is located in the heart of the Rhine-Ruhr area, a strategic location with excellent connections to the A40, A42 and A57 motorways. The site is used as the central e-fulfilment platform for the distribution of Aukey products in Germany, the Benelux countries and neighbouring markets.

Like all new developments by GLP, the logistics centre was built in compliance with the strict sustainability standards of the German Sustainable Building Council (DGNB).

The building is to be certified according to DGNB Gold.
continued →



Success stories

06. GLP Wrocław V Logistics Centre — POLAND

SHEIN, a leading global fashion e-retailer, operates a 130,000 sq m distribution hub at GLP Wrocław V Logistics Centre, employing 1,700 people. This hub plays a vital role in serving customers across Poland, Germany, the Czech Republic, and beyond.

The facility's ideal location near the S8 expressway enables efficient regional distribution and e-fulfilment. Employees also benefit from convenient public transport links, including commuter rail and bus services. The site is designed for both efficiency and sustainability, featuring DALI-controlled lighting, skylights and smart metering systems for real-time energy management. It's a modern, eco-friendly workspace where employee well-being is improved with outdoor relaxation zones, as well as bike shelters and charging stations for e-bikes and electric cars.

07. GLP Park Łędziny — POLAND

At GLP Park Łędziny, SANHUA Aweco leases a 12,000 sq m of state-of-the-art warehouse. As part of a holding company with 20,000 employees, SANHUA Aweco is a leader in technology and system solutions for the white goods, automotive, and air conditioning industries. It is estimated that components manufactured by SANHUA are used in every second new car in the world. The warehouse space in Łędziny, just 15 minutes away from the SANHUA Aweco factory in Tychy, provides an ideal solution for streamlining logistics and reducing transport costs.

continued →



SHEIN

SANHUA AWECO
Appliance Systems

Success stories

08. G-Park Colleferro 3. ITALY

In January 2025, GLP welcomed Ilomo, a leading importer and distributor of household products and goods to G-Park Colleferro 3, near Rome, a major transit hub providing access to Southern Italy. This new building provides 11,000 sq m of Grade A logistics space and is perfectly placed to support Ilomo's expansion across Italy and beyond into Europe.

09. GLP Park Praha Chrášťany. CZECH REPUBLIC


In 2021, at GLP Park Praha Chrášťany, an 11,000 sq m unit was leased to Ecologistics, a global infrastructure service provider for crossborder e-commerce, and a new customer for GLP. At our Prague warehouse, Ecologistics stores the products most frequently ordered from China ensuring fast delivery within the Czech Republic. Situated close to key transport hubs, supply chains can be optimised and efficient operations facilitated.








Explore Prime European Warehouse Locations


GLP's teams have the experience and knowledge to help advise customers and support them with their expansion plans into Europe. We can help establish new facilities, allowing growth into new markets. GLP is committed to helping customers run their operations as smoothly and efficiently as possible. We create environments where businesses can thrive and employees enjoy coming to work.

 09 Czech Republic →


 10 Poland →


 14 Italy →

 17 UK →

 20 Germany →

 26 Netherlands →

 28 Spain →

 30 France →





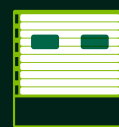
Czech Republic

GLP Park Praha Kozomin

7,600 sq m warehouse designed to meet all your logistics and showroom needs



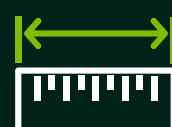
Computer generated image



16 dock doors



28 parking spots



24m yard depth



10m clear height



Air source heat pumps



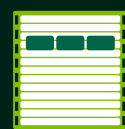
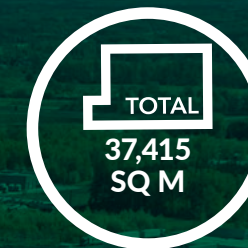
PV roof panels

Discover more [here...](#)



Warsaw VI Logistics Centre

The ideal location makes it the key warehouse facility on the eastern side of the capital



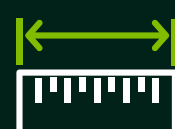
4 level access



54 dock doors



95 car parking



24m internal loading area



12m clear height



Air source heat pumps



PV roof panels



Gasless building

Discover more [here...](#)





Wrocław V Logistics Centre

Ultramodern warehouse space located 15 minutes west of Wrocław



12m
clear height



Manufacturing
ready building



Floor
loading



12.5% skylight
coverage

Discover
more [here...](#)



Gliwice II Logistics Centre

40,167 sq m warehouse in a prime location for logistics



Building A
40,167 sq m
Build-to-suit

Computer generated image



94 dock
doors



323 car
parking



12m
clear height

Discover
more [here...](#)



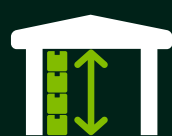


Lędziny II Park

29,644 sq m warehouse in a prime location for logistics



Computer generated image



12m
clear height



Direct access
to motorway

Discover
more [here...](#)





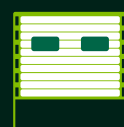
Italy

G-Park Anagni 2

A new logistics centre in a strategic location



2 level access



25 dock doors



14 HGV parking



66 car parking



12m clear height

Discover more [here...](#)





Italy

G-Park Anagni 3

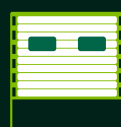
A unique opportunity within the strong logistics hub of central-southern Italy



Computer generated image



1 level
access



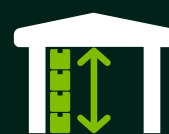
24 dock
doors



7 HGV
parking

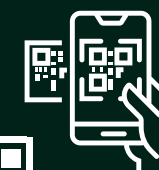


59 car
parking



12m
clear height

Discover
more [here...](#)





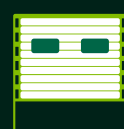
Italy

G-Park Colleferro

State-of-the-art logistics building located in the vicinity of Rome's commercial region



1 level access



25 dock doors

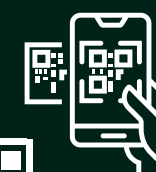


85 car parking



12m clear height

Discover more [here...](#)





UK

Magna Park North, Lutterworth

Europe's largest dedicated logistics and distribution park



MPN 7
38,239 sq m
Build-to-suit

MPN 6
79,691 sq m
Build-to-suit

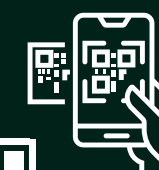
MPN 761
70,733 sq m
Speculative build

Available now!

Computer generated image



Discover more [here...](#)





UK

Magna Park South, Lutterworth

At the heart of the nation's supply chain



MPS10
12,739 sq m
Speculative build

Available
now!

MPS11
11,113 sq m
Speculative build

Available
now!

MPS 12
40,308 sq m
Build-to-suit

MPS 13
26,641 sq m
Build-to-suit

MPS 187
17,396 sq m
Speculative build

Available
now!



Discover
more [here...](#)





UK

Magna Park Corby

Build-to-suit available up to 93,256 sq m in a single building



Build-to-suit



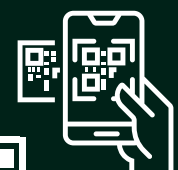
Speculative build



Immediately available



Discover more [here...](#)

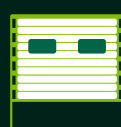


Schifferstadt Logistics Centre

Ideally located in the heart of the Rhine-Neckar area



8 level
access



40 dock
doors



35 HGV
parking

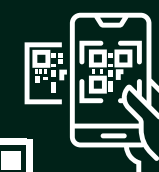


124 car
parking



12m
clear height

Discover
more [here...](#)





Philippsburg Logistics Centre

Strategically located in the north of Baden-Württemberg



Leipzig (Grimma) Logistics Centre

Unit 1 and Unit 2 — available now!



Unit 2
11,172 sq m
Speculative build

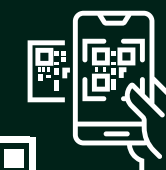
Unit 1
10,891 sq m
Speculative build

Computer generated image

Unit 2



Discover
more [here...](#)



Magna Park Berlin-Werder (Havel)

Unit 4, 6A, 6B, 8 and 10A — available now!



Unit 4
12,779 sq m
Speculative build

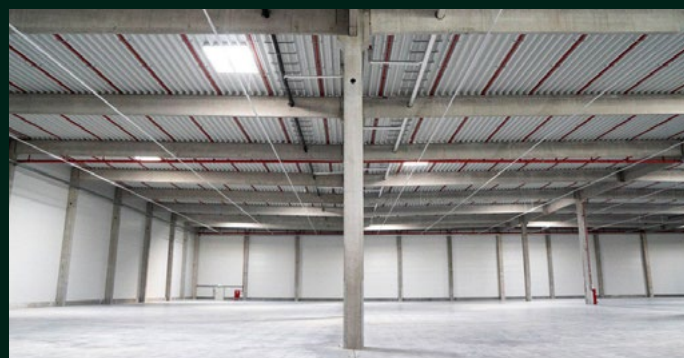
Unit 8
34,663 sq m
Speculative build

Unit 6A
11,359 sq m
Speculative build

Unit 6B
11,360 sq m
Speculative build

Unit 10A
9,357 sq m
Speculative build

Unit 8 and 10A

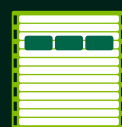


Discover
more [here...](#)

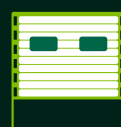


Ingolstadt Logistics Centre

Fast, cost-effective access to Western, Southern and Eastern European markets



2 level
access



12 dock
doors



3 HGV
parking



43 car
parking



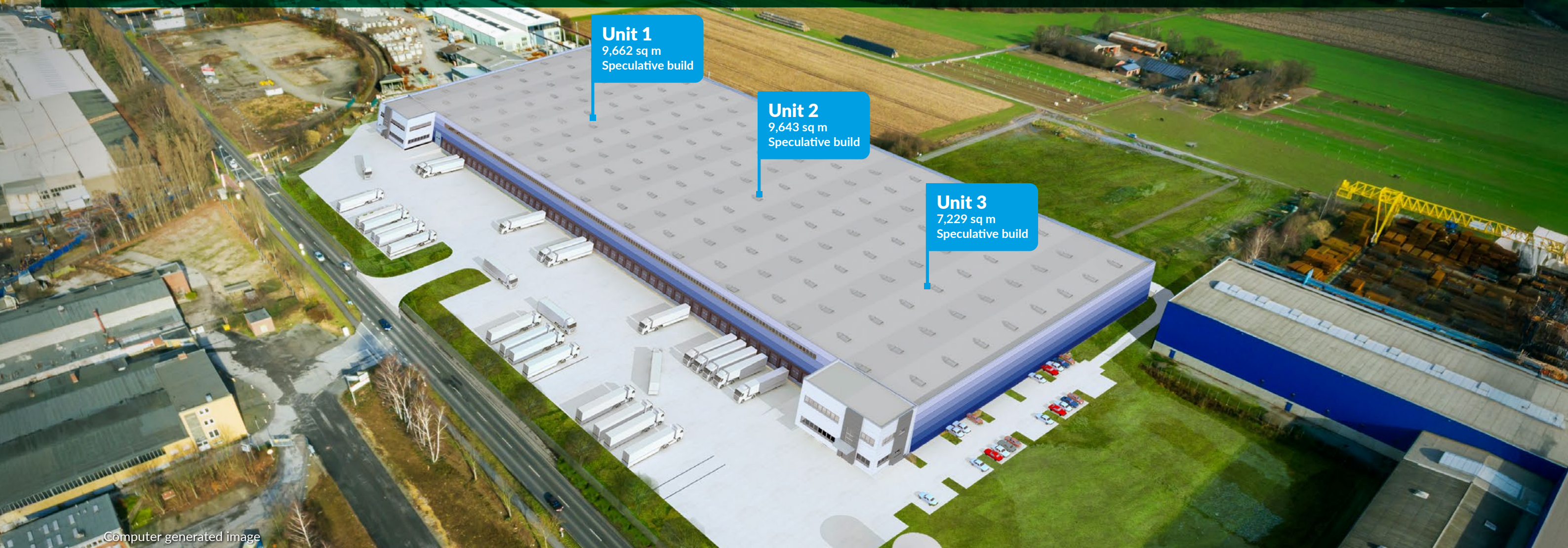
12m
clear height

Discover
more [here...](#)



Duesseldorf South 1 Logistics Centre

3 units — available August 2025!



Discover
more [here...](#)



G-Park Lelystad

Phase 2 — Units A to D — available Q2 2025



Speculative
build



Available
Q2 2025

Unit A
8,113 sq m
Speculative build

Unit B
8,095 sq m
Speculative build

Unit C
8,095 sq m
Speculative build

Unit D
8,096 sq m
Speculative build



Discover
more [here...](#)

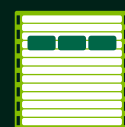


G-Park Culemborg

Two units in a unique location for logistics — available now!



Computer generated image



2 level
access



40 dock
doors



11 HGV
parking



378 car
parking



12.2m
clear height

Discover
more [here...](#)





Spain

Oaxis GLP Park Madrid Villaverde

Building 1 — 2 modules under construction, available Q2 2025



Module 3
LET

Module 2
6,721 sq m
Speculative build

Module 1
9,125 sq m
Speculative build

Computer generated image



Discover
more [here...](#)





Spain

Oaxis GLP Park Madrid Villaverde

Buildings 2 to 8 — up to 170,000 sq m



Computer generated image



OAXIS consists of more than 280,000 sq m with a total construction area of 170,000 sq m. The project will be developed in phases, which will allow for tailor-made projects according to the client's specifications.

Flexibility is the key to OAXIS.

Discover more [here...](#)



GLP Park St Witz

Strategically located in the north of Paris



Plot 1
37,037 sq m
Speculative build

Plot 2
11,215 sq m
Speculative build

Computer generated image



Building Excellence:
BREEAM 'Outstanding' target

We are targeting BREEAM 'Outstanding' certification for this development, demonstrating GLP's commitment to delivering industry-leading, environmentally responsible warehouse spaces.

Discover
more [here...](#)



For more information, please contact:

Florian Wnuck

Head of Business Development, Europe

 florian.wnuck@glp.com

 +33 6 82 57 65 24

GLP is committed to a policy of continuous development and reserves the right to make changes to information without notice. This document, the descriptions and measurements contained herein do not form part of any contract and whilst every effort has been made to ensure accuracy, this cannot be guaranteed. May 2025. Terms: Available leasehold — details upon application. Please contact the agents for a detailed proposal. Printed in the UK.

Ares Management Corporation (NYSE: ARES) has acquired a significant portion of the international business of GLP Capital Partners Limited and certain of its affiliates. For more information, visit aresmgmt.com



eu.glp.com

