

Building environments that work for you

G+Plus

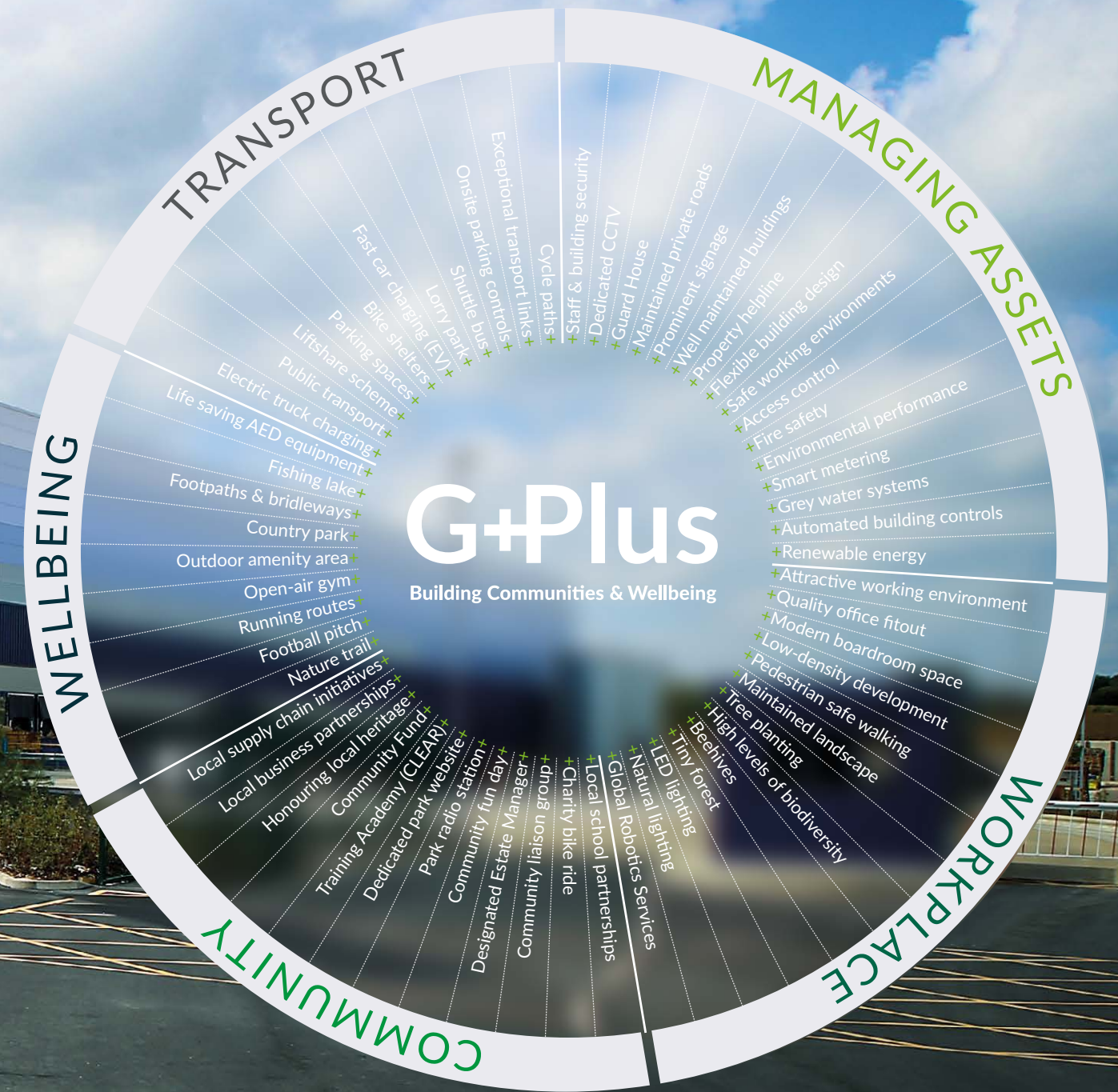
Building Communities & Wellbeing



Introducing G-Plus

We're more than a logistics park

We're on a mission to create the environment where customers' businesses can thrive, where employees enjoy coming to work and where communities and nature can flourish. We call it G-Plus — an initiative from GLP.

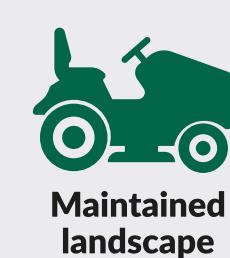
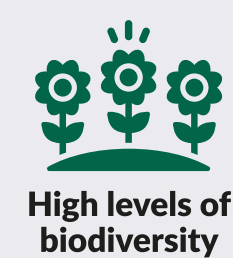
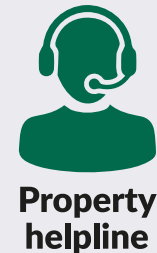
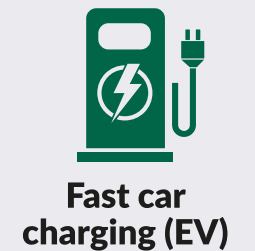


Park wide services and amenities*

When you move your business to a GLP Park, both you and your employees will benefit from a broad range of park-wide services and amenities, including access to a liftshare scheme, staff and building security, green spaces, paths and cycleways.



G-Plus highlights



*All of the G-Plus facilities and amenities will be project dependent and agreed with each customer.

We know what makes the difference

Transport+Managing Assets+Workplace+Community+Wellbeing

We believe that working in an environment with such great amenities makes the difference. Our parks are designed to promote the health and wellbeing of our customers and the wider community, which is why we say, 'We're more than a logistics park'.

G+Plus
Building Communities & Wellbeing



Transport

Transport links are the lifeblood of every logistics business – and ours are exceptional.



Our sites are more connected and more accessible, with superb strategic locations and unrivalled in transport connectivity. Your workforce can utilise on-site parking, public transport, cycle to work or even join a liftshare scheme. This all helps to create a great place to work, where your team can thrive. And as every business knows, a happy workforce is a productive workforce.

- + Public transport**
Makes it easier and cost-effective for colleagues to get to work
- + Parking spaces**
Safe and secure parking gives colleagues peace of mind and convenient access to work
- + Shuttle bus**
Saving time and money for colleagues and increasing higher productivity
- + Fast car charging (EV)**
Every new GLP development has provision for EV charging
- + Electric truck charging**
GLP is assessing the viability of electric van and truck charging at our Parks
- + Cycle paths**
Making cycling to work safer and easier

- + Bike shelters**
Encourage physical activity and keep bikes safe and secure
- + Exceptional transport links**
We work with local transport companies to provide bus connections to our Parks
- + Lorry park**
We are exploring dedicated lorry parks within our Parks
- + Liftshare scheme**
Helps to reduce congestion, save money and is good for the environment
- + Onsite parking controls**
Keeps the main roads clear of HGVs and cars for easy access for everyone



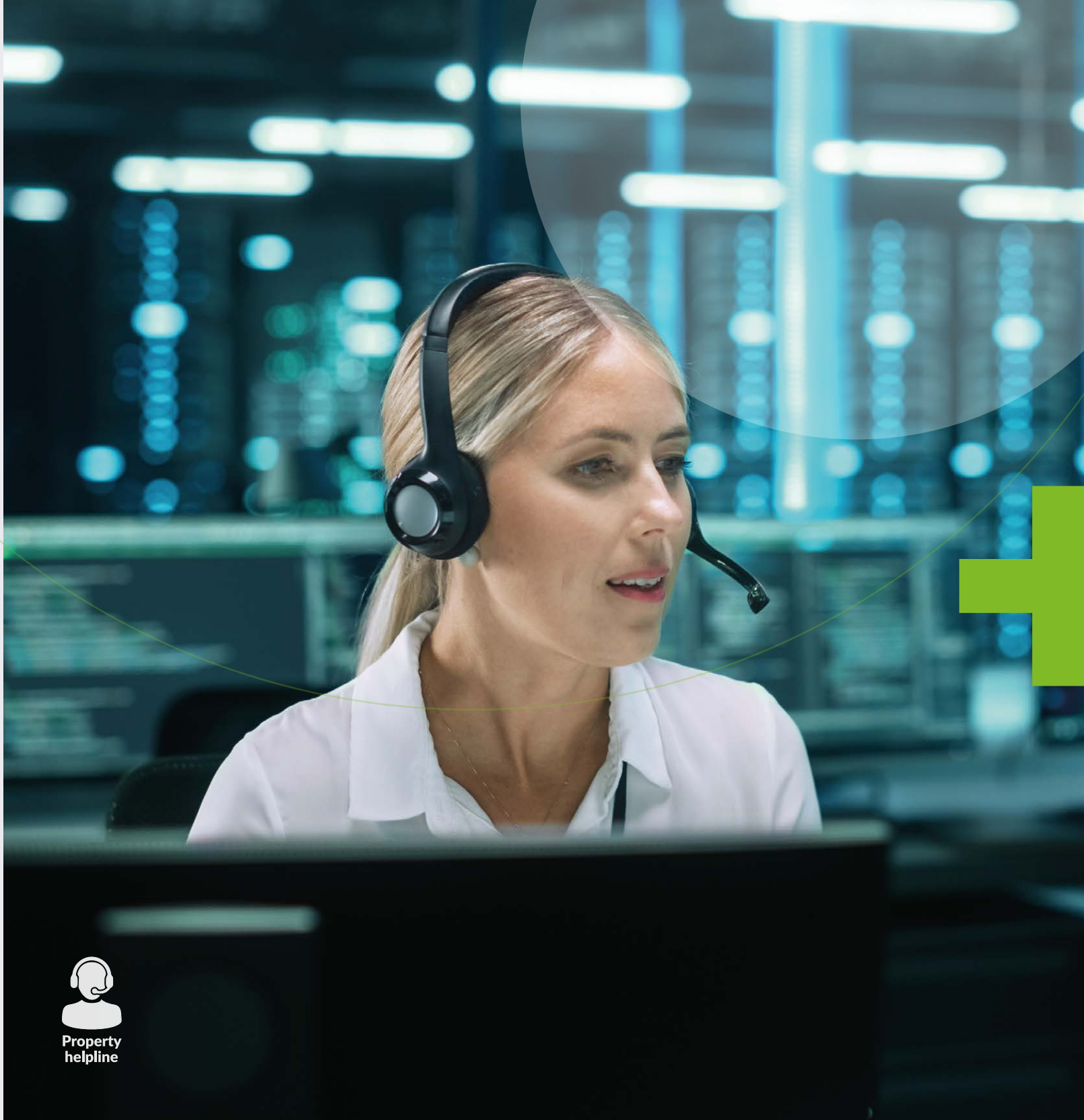
Managing Assets

Our team are committed to helping you run your business as efficiently and smoothly as possible.



We're here to help you run your business. When you move your business to a Magna Park, G-Park or G-Hub we can give you access to a wide range of services designed to make life easier for you. We adapt to the needs of our customers and work in partnership to understand the most relevant and best suited solutions for their operations.

- + Property helpline**
Committed to helping you run your business
- + Staff & building security**
Giving you and staff peace-of-mind
- + Safe working environments**
Keeping everyone safe
- + Dedicated CCTV**
For an extra level of security
- + Guard House**
Helping your security personnel perform at their best
- + Automated building controls**
Delivering greater efficiency and comfort
- + Maintained private roads**
Better control over security and parking
- + Prominent signage**
Helping everyone navigate to the right place
- + Well maintained buildings**
Ensuring health, safety and a professional image
- + Flexible building design**
Allows the building to evolve over time and change to user needs
- + Access control**
Simplify security in many ways
- + Fire safety**
Ensuring the safety of employees and building protection
- + Environmental performance**
Helping to improve the air we breathe, the food we eat and the water we drink
- + Smart metering**
Encouraging better energy usage habits
- + Grey water systems**
Reducing water and energy consumption
- + Renewable energy**
Reducing your carbon footprint & improving public health



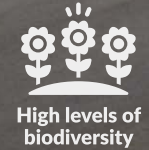
Workplace

Our logistics and distribution developments are carefully constructed and managed to create a great place to work.



Attractive modern architecture that reflects positively on your brand. Well-lit areas and low-density landscaped developments with high levels of biodiversity including tree planting and apiaries create a healthy, productive workplace for you and your team.

- + Attractive working environment**
Increasing employee happiness
- + Quality office fitout**
Reflects well on your own brand
- + Modern boardroom space**
Effective and flexible meeting space
- + Tree planting**
Helping to absorb carbon dioxide
- + LED lighting**
Longer lifespan with excellent efficiency
- + Natural lighting**
Helps to reduce lighting energy use
- + High levels of biodiversity**
Supports human and societal needs
- + Maintained landscape**
Keeping your landscape clean, attractive and safe
- + Tiny forest**
Connecting people with nature and wellbeing
- + Bees, apiaries & honey production**
Improving the local ecosystem
- + Pedestrian safe walking**
Keeping everyone safe while promoting regular physical activity
- + Low-density development**
Less congestion, traffic and noise
- + Global Robotics Services**
Reducing mundane task and increasing productivity



High levels of biodiversity



Quality office fitout



Maintained landscape



Attractive work environment



Modern boardroom space

Community

We are committed to investing in the communities in which we operate and collaborating with local organisations.



Community fun day



Charity bike ride



Training Academy (CLEAR)



Community fund



Local school partnerships



Designated Estate Manager

As the logistics industry continues to grow, we're committed to contributing to the communities in which we operate. Our goal is to build meaningful, productive, harmonious and long-lasting relationships with these communities.

We work with local schools, universities and our own Academy to give local talent the opportunities they need to thrive. We fund initiatives and charities that will bring about long-term benefits for the local community.

- + Community fun day**
Organise community days to maximise engagement and interaction
- + Community liaison group**
Establish a local community liaison group to promote communication and interaction
- + Park radio station**
Local radio station to provide up to the minute news, traffic information and all the hits!
- + Charity bike ride**
Organising charity bike rides in support of local and national charities
- + Dedicated park website**
Dedicated website that provides local information, contacts, news and updates
- + Designated Estate Manager**
Providing a dedicated manager to look after the park and amenities
- + Training Academy (CLEAR)**
Working in partnership to provide a dedicated logistics training facility
- + Community Fund**
Managing a local community fund to raise money for good causes and facilities
- + Honouring local heritage**
Respectful and conserving local heritage
- + Local school partnerships**
Working with local schools to provide visits and education days
- + Local business partnerships**
Working with local businesses to provide jobs and training opportunities
- + Local supply chain initiatives**
Supporting local supply chains with goods and services



Community fun day



Charity bike ride



Local school partnerships



Training Academy (CLEAR)

Wellbeing

We believe that employees who are happy and fulfilled are more likely to contribute to the success of your business.



At GLP, we believe that it is essential to nurture 'wellbeing'. It is fundamental in attracting and retaining the best talent and contributing to provide a great place to work – helping to build a sense of community.

We build to Well principles, but we go beyond the building. Running routes, country parks, open-air gyms, footpaths and recreation areas all help your team become healthier and happier, leading to improved performance.

+ Running routes
Encouraging physical activity for health and mental wellbeing

+ Outdoor amenity area
Creating spaces for the benefit of enjoyment

+ Open-air gym
Encouraging a regular gym workout with no membership fees

+ Country park
Whether you are exercising, walking the dog or flying a kite, parks are a great way to clear your head and improve your mental health

+ Life saving AED equipment
One day this could help to save a life

+ Footpaths and bridleways
Rights of way for walking, horse riding, bicycles, mobility scooters or powered wheelchairs

+ Fishing lake
Fishing helps to reduce anxiety, fight off depression, and promote relaxation

+ Nature trail
Nature trails offer environmental, health and social benefits

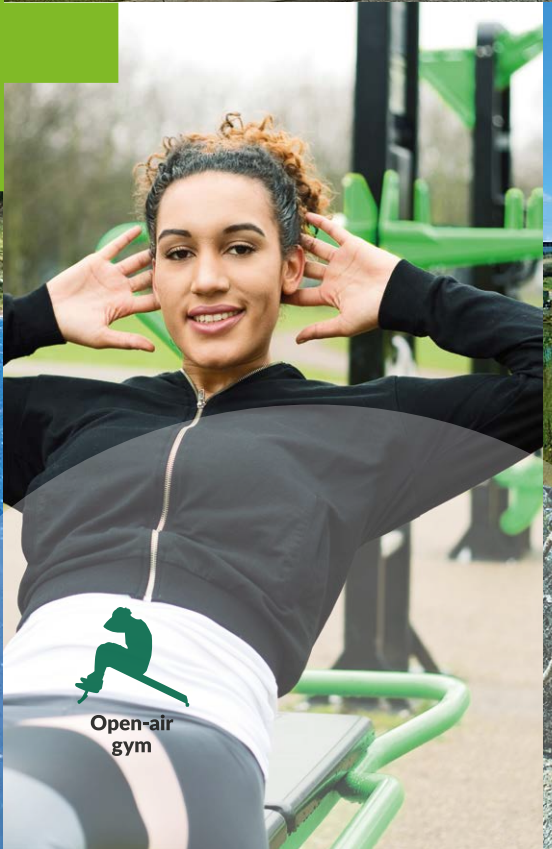
+ Football pitch
Build your team-building skills and improve physical fitness while having fun



Outdoor amenity area



Running routes



Open-air gym



Nature trail



G+Plus

Building Communities & Wellbeing

GLP is committed to creating a pleasant, healthy and safe workplace for all. We provide a range of benefits – including a nature trail, outdoor seating, safe and secure parking, high levels of biodiversity and a high quality modern attractive working environment – for everyone to enjoy.

GLP
50 New Bond Street
London WS1 1BJ

This presentation has been issued for informational purposes only and has been provided on a confidential basis. It must not be distributed, published, copied or disclosed, in whole or in part, to anyone who is not the intended recipient without the prior written consent of the sender. Nothing in this presentation should constitute as advice, recommendations, as an invitation to transact or be considered as an offer to sell. All of the products, facilities, amenities and offerings discussed in connection with G-Plus are a product of past projects and are not an indication of any future results.

No representation is made herein as to the accuracy or completeness of the information contained in this presentation, and neither GLP, nor any of its affiliates, partners, members, or employees, assume any responsibility for the accuracy of such information. This presentation will not be updated to address information or circumstances that change after the date of issue, May 2023.



eu.glp.com