

EUROPEAN DESIGN GUIDE

glp.com/eu





CONTENTS

01 - OFFICE EXTERNALS	PG. 04 - 07
02 - OFFICE CLADDING	PG. 08 - 15
03 - OFFICE ENTRANCE	PG. 16 - 23
04 - OFFICE RECEPTION STAIRCASE	PG. 24 - 29
05 - OFFICE RECEPTION	PG. 30 - 37
06 - OFFICE FINISHES	PG. 38 - 45
07 - OFFICE TOILETS, LOCKER AREA AND CANTEEN	PG. 46 - 61
08 - OFFICE KITCHEN	PG. 62 - 65
09 - OFFICE MOOD BOARD	PG. 66 - 73
10 - GLP SIGNAGE	PG. 74 - 117
11 - FRANCE	PG. 118 - 125
12 - GERMANY	PG. 126 - 135
13 - NETHERLANDS	PG. 136 - 143
14 - ITALY	PG. 144 - 147
15 - POLAND	PG. 148 - 159
16 - SPAIN	PG. 160 - 167
17 - CONTACT	PG. 168 - 169

1

OFFICE EXTERNALS

- Electrical cars and bikes charging
- White lining symbols to be standardised
- External paving to tie in with entrance detail



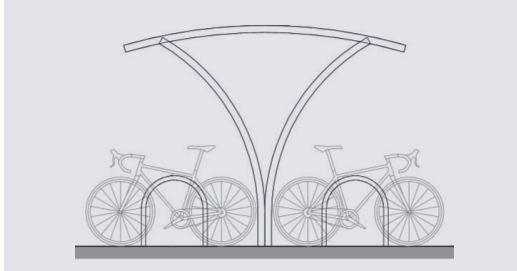
1 - OFFICE EXTERNALS

OFFICE
EXTERNALS

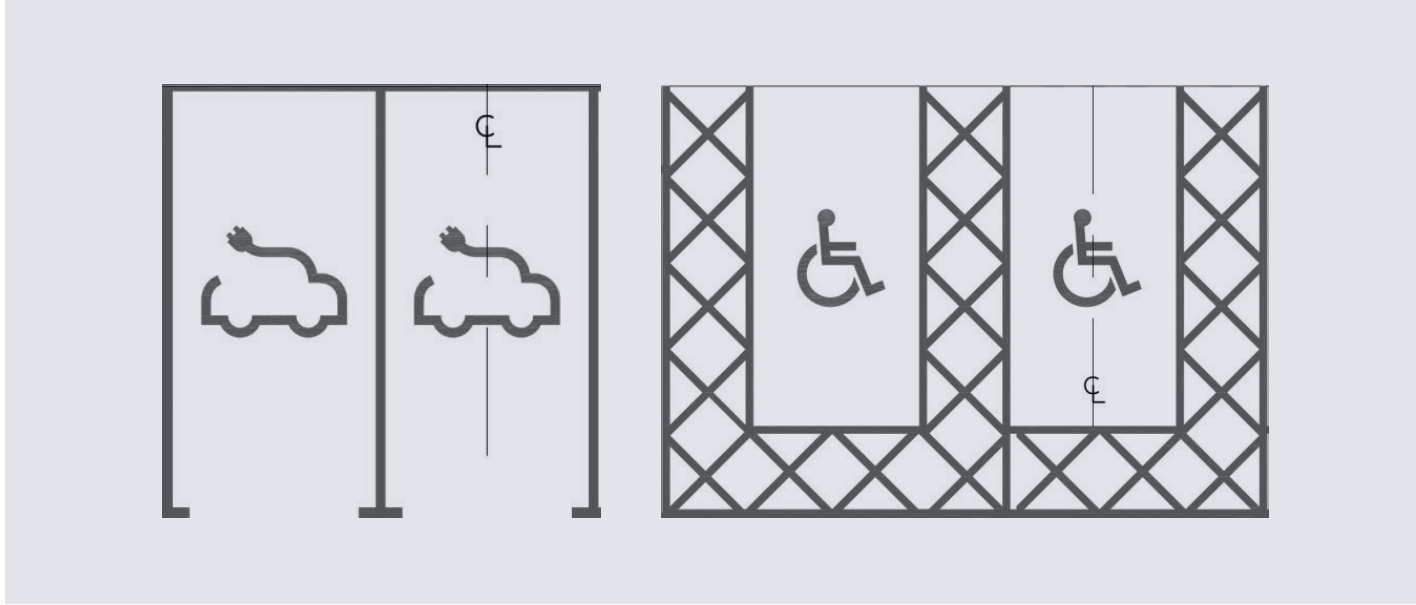
- 1. Electric cars and bike charging
- 2. White lining symbols to be standardised
- 3. External paving to tie in with the entrance detail

Sustainability Considerations

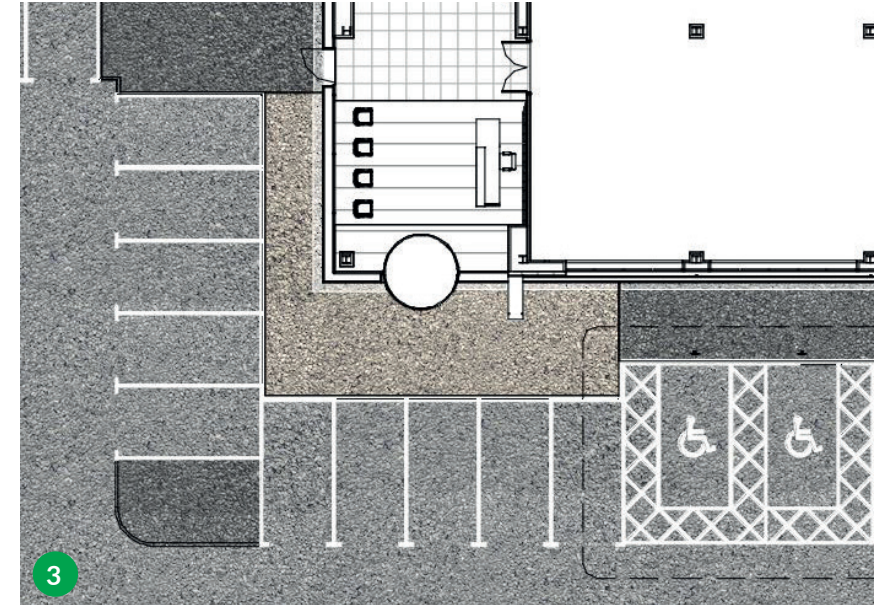
- Ensure all hard landscaping finishes have reclaimed content where possible
- Number of bicycle spaces in accordance with the WELL Building Standards guidance



Covered Bicycle Shelter



Parking Lining Plan



External entrance paving plan



Image showing white lining



2

OFFICE CLADDING

- 3 storey - Single two-colour cladding options
- 2 storey - Single two-colour cladding options



2 - OFFICE CLADDING

OUTBOARD
OFFICE CLADDING

- 1. 3 storey – Single two-colour cladding options
- 2. 2 storey – Single two-colour cladding options

Sustainability Considerations

- Minimise glazing to the north to reduce heat loss. Ensure that there is a shading strategy to glazing to the east, west and south
- Glazing amount in accordance with WELL building standards guidance
- Glazing to be at least double glazed
- Steel cladding, lower embodied carbon

Office doors and windows to be Anthracite Grey RAL 7016 externally and white internally.

Note: Southern countries that might have too much exposure to sun please change office cladding colour from RAL 5003 to RAL 270 70 20. Also, consider changing the glazed façades from south to north.

*RAL 270 85 10 can be omitted if the provider doesn't have it.



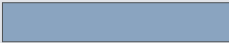
Prisma Blue White
RAL 270 90 05



Prisma Blue Lilac*
RAL 270 85 10



Prisma Baltic Blue
RAL 270 80 15



Prisma Chalk Blue
RAL 270 70 20
Offices Southern Countries



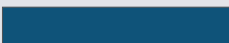
Prisma Lilcal
RAL 270 60 25



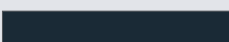
Prisma Bluebell
RAL 270 50 30



Sapphire Blue
RAL 5003
Offices Northern Countries



Gentian Blue
RAL 5010
Warehouse Level Access, Dock Pedestrian Doors



Prisma Blue Lilac
RAL 270 85 10
Office Doors, Curtian Walling Frames and Feature Entrance



Prisma Blue Lilac
RAL 270 85 10
Warehouse and Office Roof Areas



Glazed entrance facade



Glazed entrance facade



Glazed entrance facade

2 - OFFICE CLADDING

OUTBOARD
OFFICE CLADDING

- 1. 3 storey – Single two-colour cladding options
- 2. 2 storey – Single two-colour cladding options

Sustainability Considerations

- Minimise glazing to the north to reduce heat loss. Ensure that there is a shading strategy to glazing to the east, west and south
- Glazing amount in accordance with WELL building standards guidance
- Glazing to be at least double glazed
- Steel cladding, lower embodied carbon

Office doors and windows to be Anthracite Grey RAL 7016 externally and white internally.

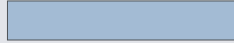
*RAL 270 85 10 can be omitted if the provider doesn't have it.



Prisma Blue White
RAL 270 90 05



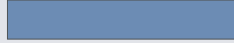
Prisma Blue Lilac*
RAL 270 85 10



Prisma Baltic Blue
RAL 270 80 15



Prisma Chalk Blue
RAL 270 70 20
Offices Southern Countries



Prisma Lilcal
RAL 270 60 25



Prisma Bluebell
RAL 270 50 30



Sapphire Blue
RAL 5003
Offices Northern Countries



Gentian Blue
RAL 5010
Warehouse Level Access, Dock Pedestrian Doors



Prisma Blue Lilac
RAL 270 85 10
Office Doors, Curtian Walling Frames and Feature Entrance



Prisma Blue Lilac
RAL 270 85 10
Warehouse and Office Roof Areas



Glazed entrance facade



Glazed entrance facade



Glazed entrance facade

2 - OFFICE CLADDING

INBOARD
OFFICE CLADDING

Sustainability Considerations

- Consider where the finishes are necessary exposed soffits and concrete floors can be aesthetically pleasing and can reduce material needed and costs
- Ensure all finishes are either recycled and/or recyclable

Office doors and windows to be Anthracite Grey RAL 7016 externally and white internally.

*RAL 270 85 10 can be omitted if the provider doesn't have it.



Prisma Blue White
RAL 270 90 05



Prisma Blue Lilac*
RAL 270 85 10



Prisma Baltic Blue
RAL 270 80 15



Prisma Chalk Blue
RAL 270 70 20
Offices Southern Countries



Prisma Lilac
RAL 270 60 25



Prisma Bluebell
RAL 270 50 30



Sapphire Blue
RAL 5003
Offices Northern Countries



Gentian Blue
RAL 5010
Warehouse Level Access, Dock
Pedestrian Doors



Prisma Blue Lilac
RAL 270 85 10
Office Doors, Curtian Walling Frames
and Feature Entrance



Prisma Blue Lilac
RAL 270 85 10
Warehouse and Office Roof Areas



3

OFFICE ENTRANCE

- Office entrance features
- Office entrance circular door
- Office entrance double doors



3 - OFFICE ENTRANCE

OFFICE
ENTRANCE FEATURE

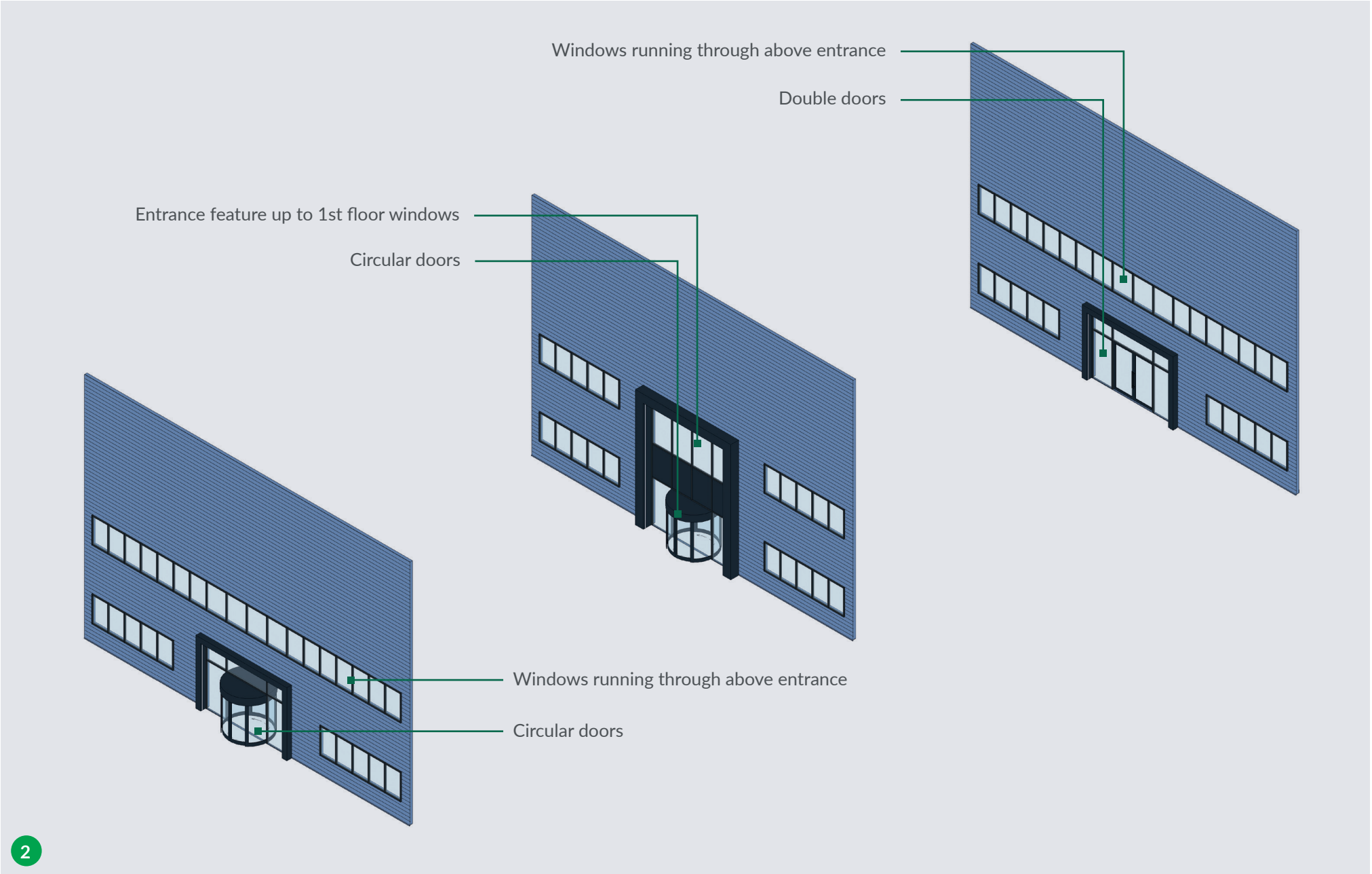
- 1. Feature with LED surrounds
- 2. Curtain walling

Sustainability Considerations

- Consider a draught lobby where there is no circular door to retain heat



Entrance feature to incorporate LED light



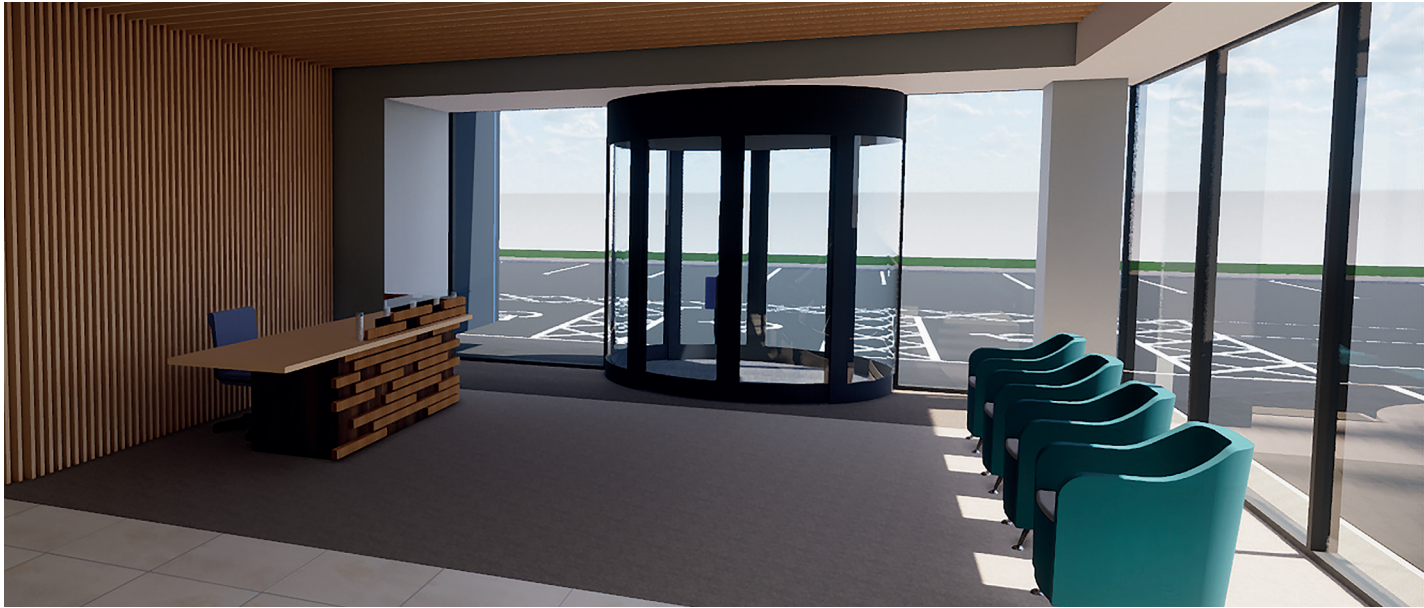
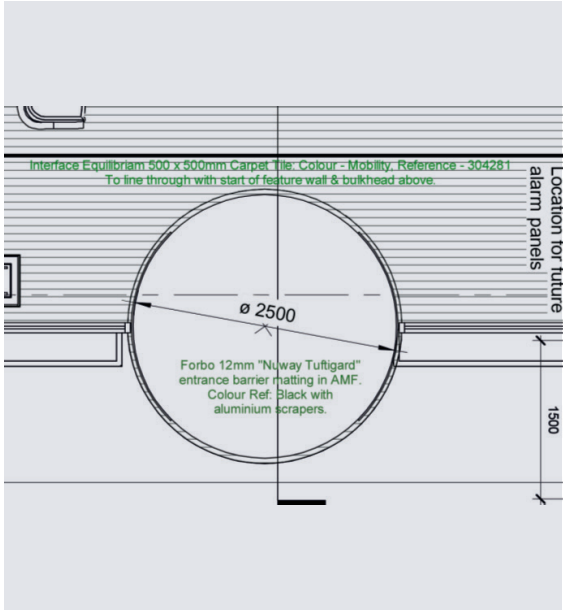
Entrance feature to incorporate LED light

3 - OFFICE ENTRANCE

OFFICE ENTRANCE
CIRCULAR DOOR

Sustainability Considerations

- All smoking areas to be located clear of any entrances in accordance with the WELL building standards guidance
- Entrance to be a healthy entrance in accordance with the WELL building standard guidance

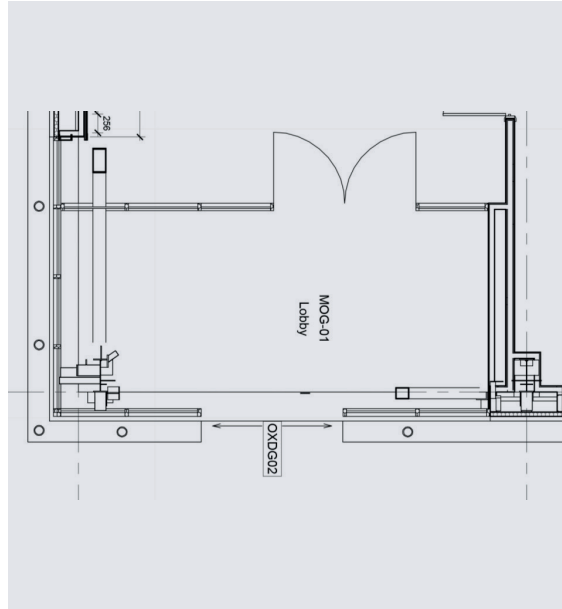


3 - OFFICE ENTRANCE

OFFICE ENTRANCE
DOUBLE DOORS

Sustainability Considerations

- All smoking areas to be located clear of any entrances in accordance with the WELL building standards guidance
- Entrance to be a healthy entrance in accordance with the WELL building standard guidance



4

OFFICE RECEPTION STAIRCASE

- Layouts
- Finishes
- Lighting



4 - OFFICE RECEPTION STAIRCASE

OFFICE RECEPTION STAIRCASE

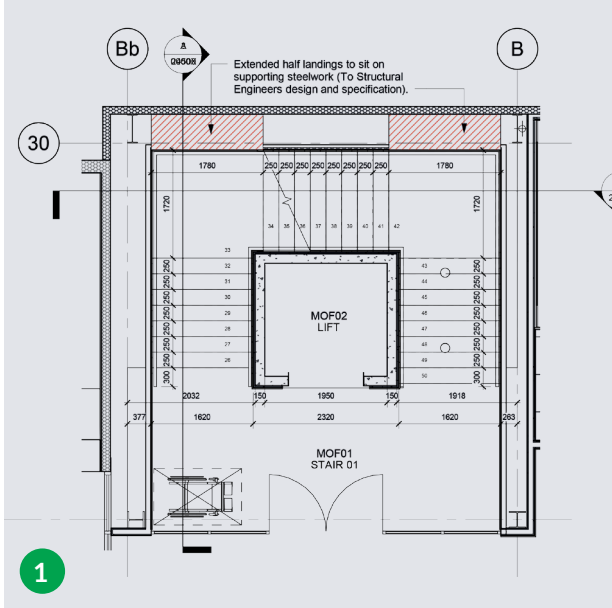
- 1. Layouts
- 2. Finishes

Staircase Benefits

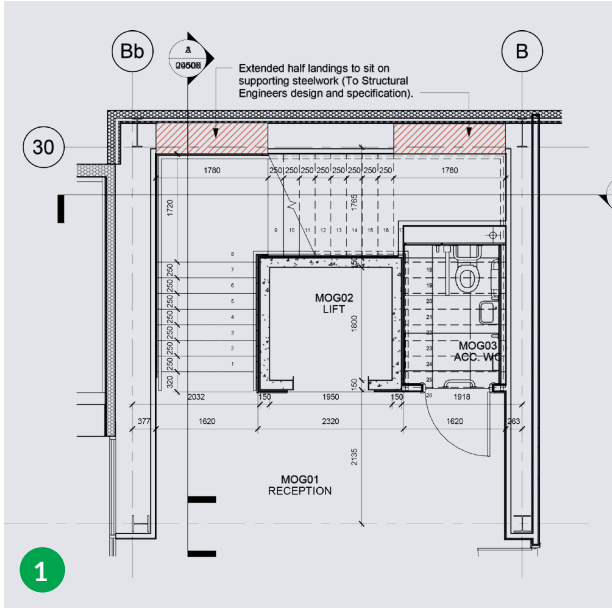
- Works well for wellbeing design that can be identified/viewed from entry
- 1400mm wide to invite and promotes visibility
- 3-flight stairs with varies landing gives the feeling of light travel
- Allows for WC under the staircase

Sustainability Considerations

- Ensure all finishes are selected in alignment with the WELL building standards guidance
- Stairs to be considered a feature staircase in accordance with the WELL building standards guidance



First Floor Layout



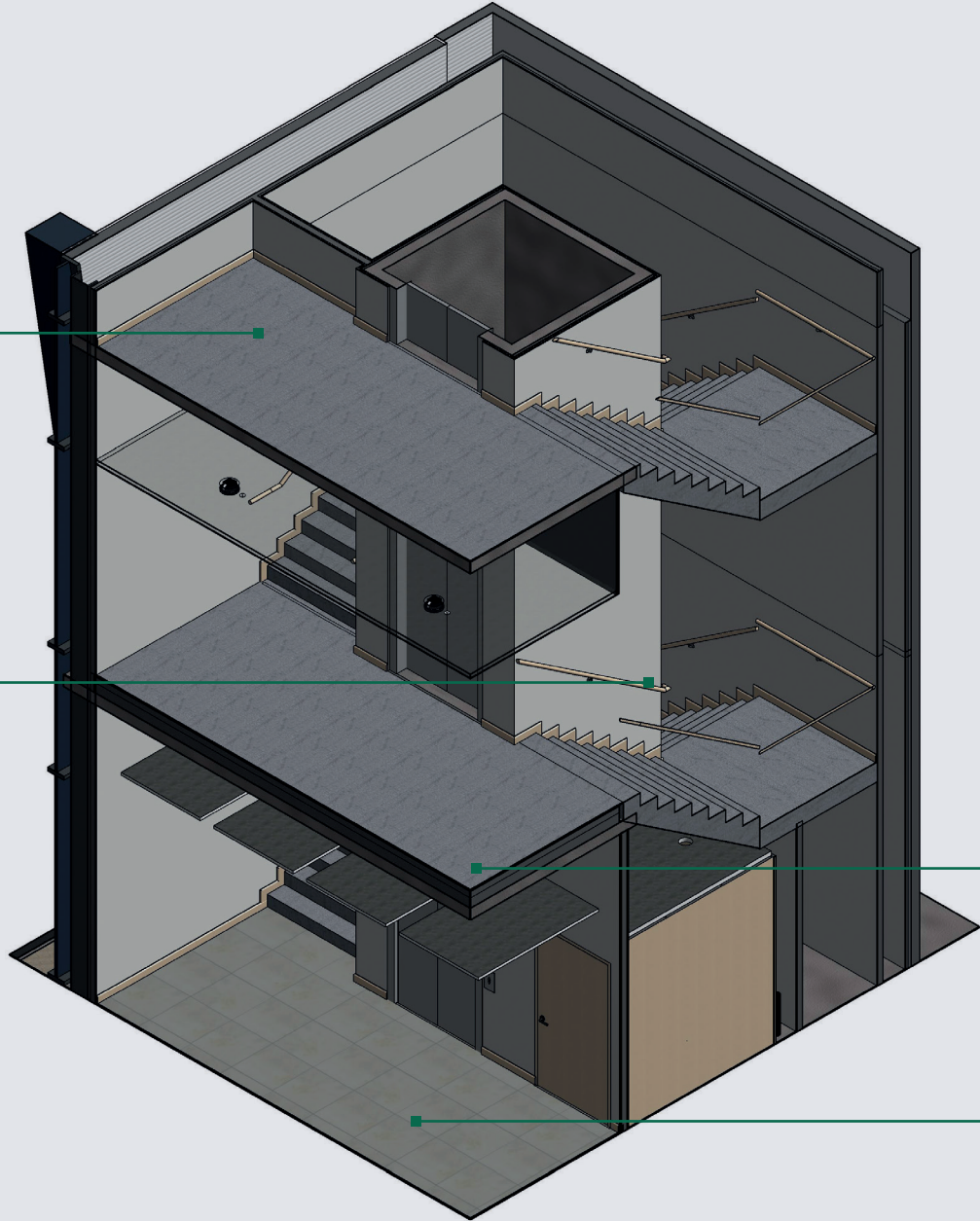
Ground Floor Layout



Interface Icebreaker Carpet



American Light Oak Skirting and Handrail



Windows running through above entrance



Ground floor stair core view

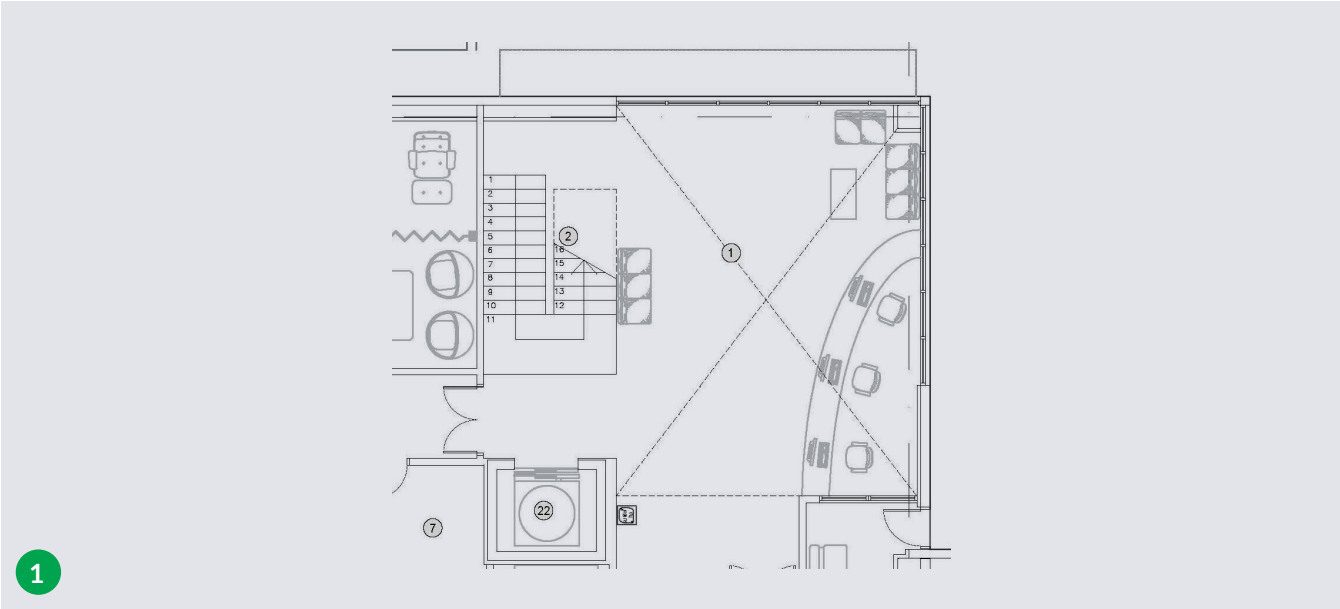
4 - OFFICE RECEPTION STAIRCASE

OFFICE RECEPTION STAIRCASE

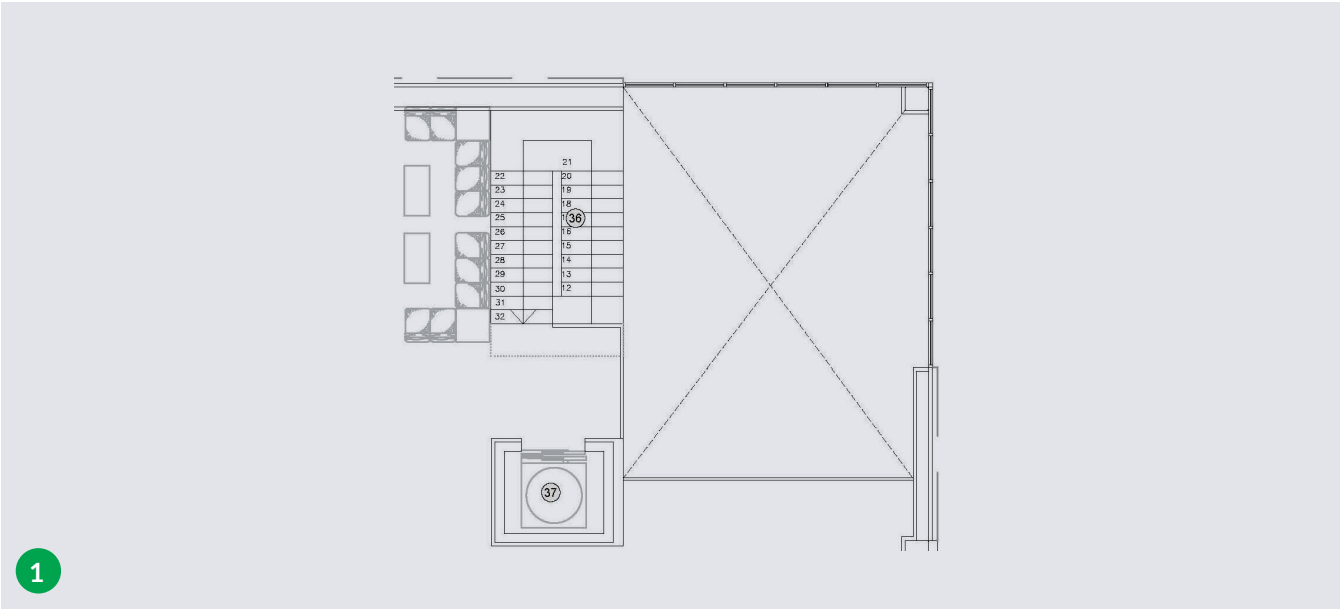
- 1. Layouts
- 2. Finishes

Sustainability Considerations

- Stairs to be considered a feature staircase in accordance with the WELL building standards guidance



First Floor Layout



Ground Floor Layout



Finishes: Ceramic floor tiles, white painted walls and staircase and suspended ceiling tiles

5

OFFICE RECEPTION

- Layouts
- Internal finishes



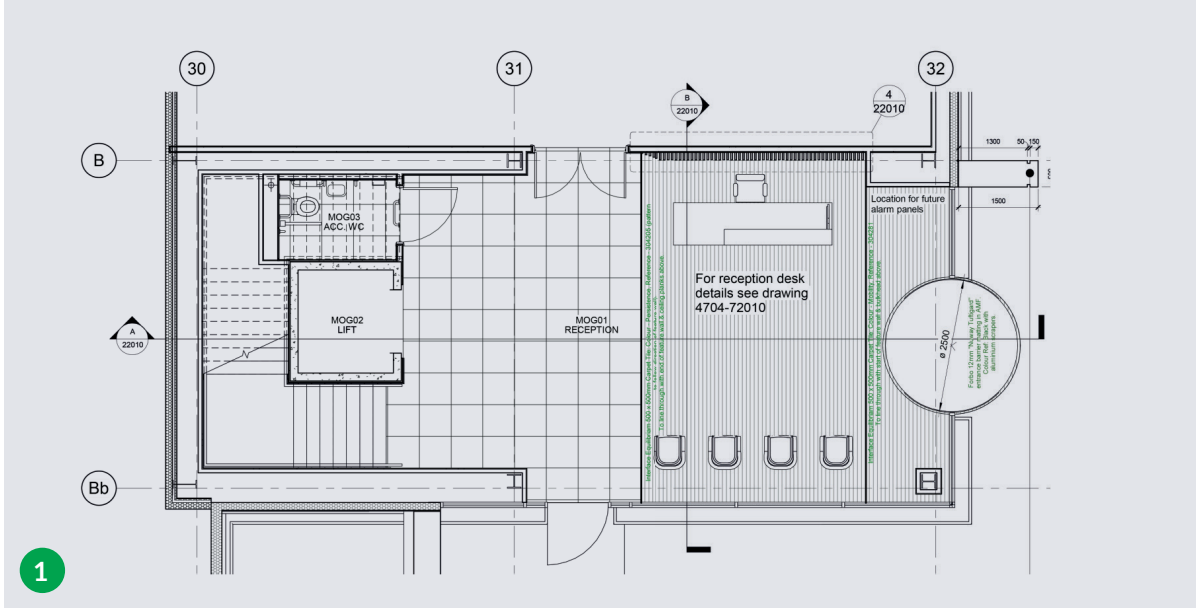
5 - OFFICE RECEPTION

OFFICE
RECEPTION LAYOUT

- 1. Layout
- 2. Finishes

Sustainability Considerations

- Ensure all finishes are selected in alignment with the WELL building standards guidance
- Any timber finishes to be either PEFC/ FSC certified and untreated if possible



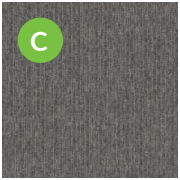
Reception Layout Option 1



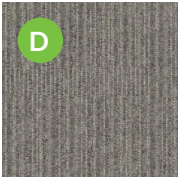
Exposed ceiling with acoustic panels and strip LED



American Light Oak Timber
Slat Feature Wall Design



500x500 Interfaceflor
Equilibrium 304205
Persistence



500x500 Interfaceflor
Equilibrium 304205
Mobility



Internal view

5 - OFFICE RECEPTION

OFFICE RECEPTION INTERNAL

Reception Green Wall Feature

- A. Silver Earth bore paint
- B. Green feature wall
- C. Ceramic tiles
- D. American light oak timber slat feature ceiling with LED strip lights
- E. Exposed ceiling with acoustic panels

Sustainability Considerations

- Consider where the finishes are necessary exposed soffits and concrete floors can be aesthetically pleasing and can reduce material needed and costs
- Ensure all finishes are either recycled and/or recyclable



5 - OFFICE RECEPTION

OFFICE RECEPTION INTERNAL

Reception Slat Wall Feature

- A. Silver Earth bore paint
- B. American light oak timber slat feature wall
- C. Ceramic tiles
- D. American light oak timber slat feature ceiling with LED strip lights
- E. Exposed ceiling with acoustic panels

Sustainability Considerations

- Consider where the finishes are necessary exposed soffits and concrete floors can be aesthetically pleasing and can reduce material needed and costs
- Ensure all finishes are either recycled and/or recyclable



6

OFFICE FINISHES

- Sustainable product options 1, 2 and 3



6 - OFFICE FINISHES

SUSTAINABLE OFFICE FINISHES

Sustainable Products: Option 1

- A. Acoustic ceiling
- B. Open ceiling
- C. American oak skirting
- D. Silver Earth bore paint
- E. Central plasterboard bulkhead/corridor zone
- F. Vinyl
- G. 100% Recycled carpet - 500x500 Gritstone carpet tile

Sustainability Considerations

- Consider where the finishes are necessary exposed soffits and concrete floors can be aesthetically pleasing and can reduce material needed and costs
- Ensure all finishes are either recycled and/or recyclable
- Ensure all finishes are selected in alignment with the WELL building standards guidance
- Consider air quality in alignment with WELL building standard guidance
- Consider lux lighting levels in alignment with WELL building standard guidance
- Paints to be 0 VOC and organic if possible



6 - OFFICE FINISHES

SUSTAINABLE OFFICE FINISHES

Sustainable Products: Option 2

- A. Strip light
- B. Suspended ceiling
- C. American oak skirting
- D. Silver Earth bore paint
- E. Central plasterboard bulkhead/corridor zone
- F. Vinyl covering specification similar to Option 1 and 3

Sustainability Considerations

- Consider where the finishes are necessary exposed soffits and concrete floors can be aesthetically pleasing and can reduce material needed and costs
- Ensure all finishes are either recycled and/or recyclable
- Ensure all finishes are selected in alignment with the WELL building standards guidance
- Consider air quality in alignment with WELL building standard guidance
- Consider lux lighting levels in alignment with WELL building standard guidance
- Paints to be 0 VOC and organic if possible



6 - OFFICE FINISHES

SUSTAINABLE
OFFICE FINISHES

Sustainable Products: Option 3

- A. Strip light
- B. Suspended ceiling
- C. American oak skirting
- D. Silver Earth bore paint
- E. Central plasterboard bulkhead/corridor zone
- F. Ceramic tiles specification similar colours to Option 1 and 2

Sustainability Considerations

- Consider where the finishes are necessary exposed soffits and concrete floors can be aesthetically pleasing and can reduce material needed and costs
- Ensure all finishes are either recycled and/or recyclable
- Ensure all finishes are selected in alignment with the WELL building standards guidance
- Consider air quality in alignment with WELL building standard guidance
- Consider lux lighting levels in alignment with WELL building standard guidance
- Paints to be 0 VOC and organic if possible



7

OFFICE TOILETS, LOCKER AREA AND CANTEEN

- Toilets standard layouts and material finishes
- Locker area standard layouts and material finishes
- Canteen standard layouts and material finishes

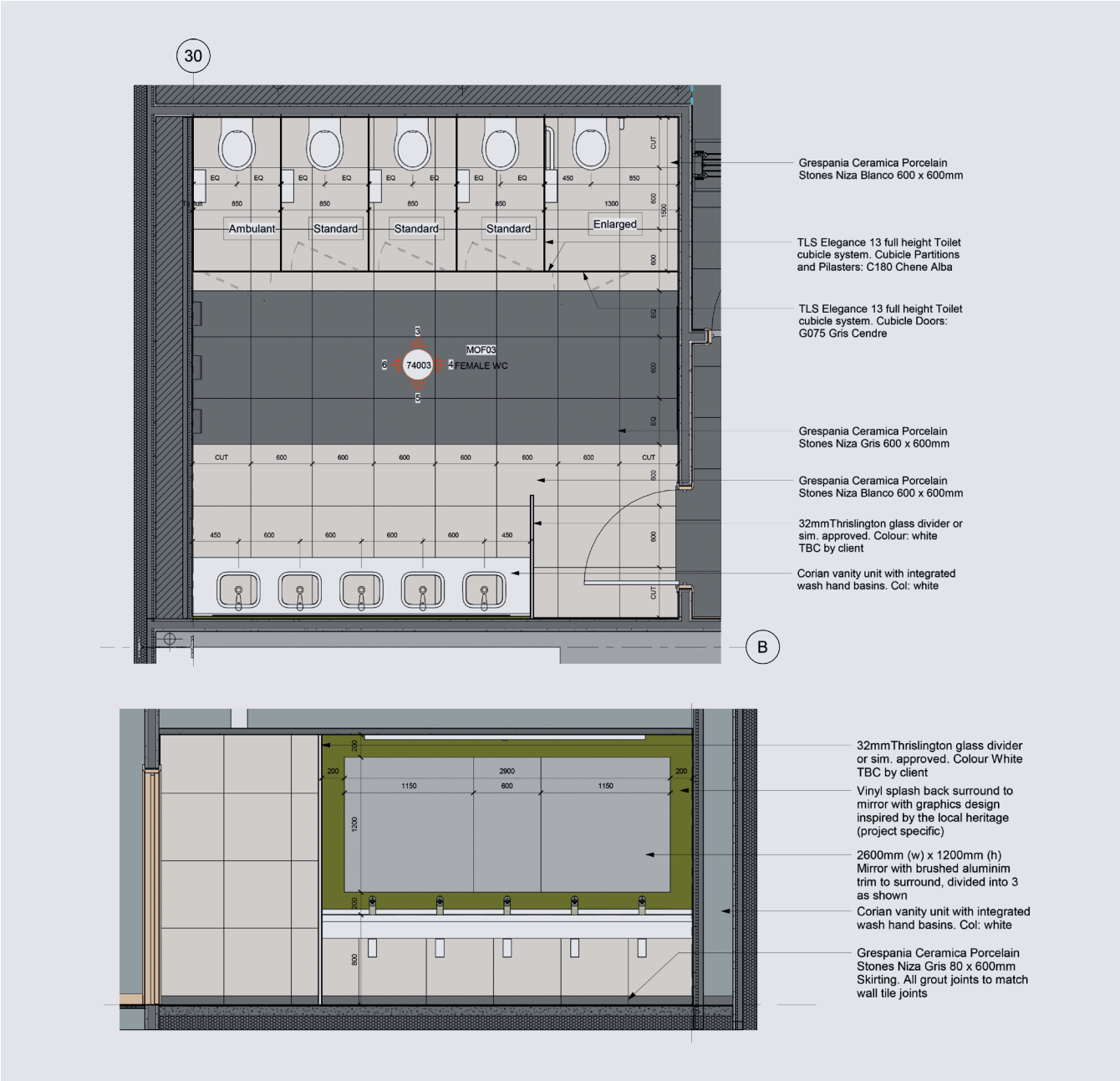


7 - TOILETS, LOCKER AREA AND CANTEEN

OFFICE TOILETS

Sustainability Considerations

- Ensure all finishes are selected in alignment with the WELL building standards guidance
- Paper towel provision in alignment with WELL building standard guidance
- Basins and tap designs in alignment with WELL building standard guidance
- Consider water quality in alignment with WELL building standard guidance
- Low water appliances and spray taps to reduce water consumptions
- Ensure all finishes are either recycled and/ or recyclable
- Paints to be 0 VOC and organic if possible



WC plan and WC sink elevation

Material Finishes:

- A** Recess ceiling for LED strip light
- B** 32mm Thrislington glass divider or sim
- C** Vinyl splash back surround to mirror with graphics design
- D** Corian vanity unit with integrated wash hand basins

Porcelain Niza Antracita



Porcelain Niza Blanco



7 - TOILETS, LOCKER AREA AND CANTEEN

OFFICE TOILETS

Sustainability Considerations

- Ensure all finishes are selected in alignment with the WELL building standards guidance
- Paper towel provision in alignment with WELL building standard guidance
- Basins and tap designs in alignment with WELL building standard guidance
- Consider water quality in alignment with WELL building standard guidance
- Low water appliances and spray taps to reduce water consumptions
- Ensure all finishes are either recycled and/or recyclable
- Paints to be 0 VOC and organic if possible

Material Finishes:

- A** Recess ceiling for LED strip light
- B** Wall and floor black/grey ceramic tile
- C** Wall and floor white/cream ceramic tile
- D** Spot lighting
- E** 32mm Thrislington glass divider or sim
- F** Strip light
- G** Vinyl splash back surround to mirror with graphics design
- H** Corian vanity unit with integrated wash hand basins



7 - TOILETS, LOCKER AREA AND CANTEEN

OFFICE TOILETS

Sustainability Considerations

- Ensure all finishes are selected in alignment with the WELL building standards guidance
- Paper towel provision in alignment with WELL building standard guidance
- Basins and tap designs in alignment with WELL building standard guidance
- Consider water quality in alignment with WELL building standard guidance
- Low water appliances and spray taps to reduce water consumptions
- Ensure all finishes are either recycled and/or recyclable
- Paints to be 0 VOC and organic if possible

Material Finishes:

- A** 32mm Thrislington glass divider or sim
- B** Strip light
- C** Vinyl splash back surround to mirror with graphics design
- D** Corian vanity unit with integrated wash hand basins
- E** Wall and floor white/cream ceramic tile
- F** Wall and floor black/grey ceramic tile
- G** Recess ceiling for LED strip light



7 - TOILETS, LOCKER AREA
AND CANTEEN

OFFICE
LOCKER AREA

Sustainability Considerations

- Ensure all finishes are selected in alignment with the WELL building standards guidance
- Paper towel provision in alignment with WELL building standard guidance
- Basins and tap designs in alignment with WELL building standard guidance
- Consider water quality in alignment with WELL building standard guidance
- Low water appliances and spray taps to reduce water consumptions
- Ensure all finishes are either recycled and/or recyclable
- Paints to be 0 VOC and organic if possible

Material Finishes:

- A** Moisture resistant ceiling with spotlight
- B** Ceramic white floor tiles
- C** Earthborn EcoPro matt emulsion paint
- D** American oak skirting
- E** Ceramic white wall floor tiles



7 - TOILETS, LOCKER AREA AND CANTEEN

OFFICE LOCKER AREA

Sustainability Considerations

- Ensure all finishes are selected in alignment with the WELL building standards guidance
- Paper towel provision in alignment with WELL building standard guidance
- Basins and tap designs in alignment with WELL building standard guidance
- Consider water quality in alignment with WELL building standard guidance
- Low water appliances and spray taps to reduce water consumptions
- Ensure all finishes are either recycled and/or recyclable
- Paints to be 0 VOC and organic if possible

Material Finishes:

- A** Moisture resistant ceiling with spotlight
- B** Ceramic black floor tiles
- C** Earthborn EcoPro matt emulsion paint
- D** Corian vanity unit with integrated wash hand basins
- E** Ceramic tiles



7 - TOILETS, LOCKER AREA AND CANTEEN

OFFICE CANTEEN

Sustainability Considerations

- Ensure all finishes are selected in alignment with the WELL building standards guidance
- Canteen layout in alignment with WELL building standard guidance
- Eating space in alignment with WELL building standard guidance
- Basins and taps in kitchen areas to be designed in alignment with WELL building standard guidance
- Paints to be 0 VOC and organic if possible
- Ensure all finishes are either recycled and/or recyclable
- Low water appliances to kitchen areas to reduce water consumptions
- Consider water quality in alignment with WELL building standard guidance

Material Finishes:

- A** Suspended ceiling
- B** Vinyl covering specification
- C** Earthborn EcoPro matt emulsion paint
- D** American oak skirting



7 - TOILETS, LOCKER AREA AND CANTEEN

OFFICE CANTEEN

Sustainability Considerations

- Ensure all finishes are selected in alignment with the WELL building standards guidance
- Canteen layout in alignment with WELL building standard guidance
- Eating space in alignment with WELL building standard guidance
- Basins and taps in kitchen areas to be designed in alignment with WELL building standard guidance
- Paints to be 0 VOC and organic if possible
- Ensure all finishes are either recycled and/or recyclable
- Low water appliances to kitchen areas to reduce water consumptions
- Consider water quality in alignment with WELL building standard guidance

Material Finishes:

- A** Suspended ceiling
- B** Ceramic floor tiles
- C** Earthborn EcoPro matt emulsion paint
- D** American oak skirting



8

OFFICE KITCHEN

- Layouts
- Material finishes

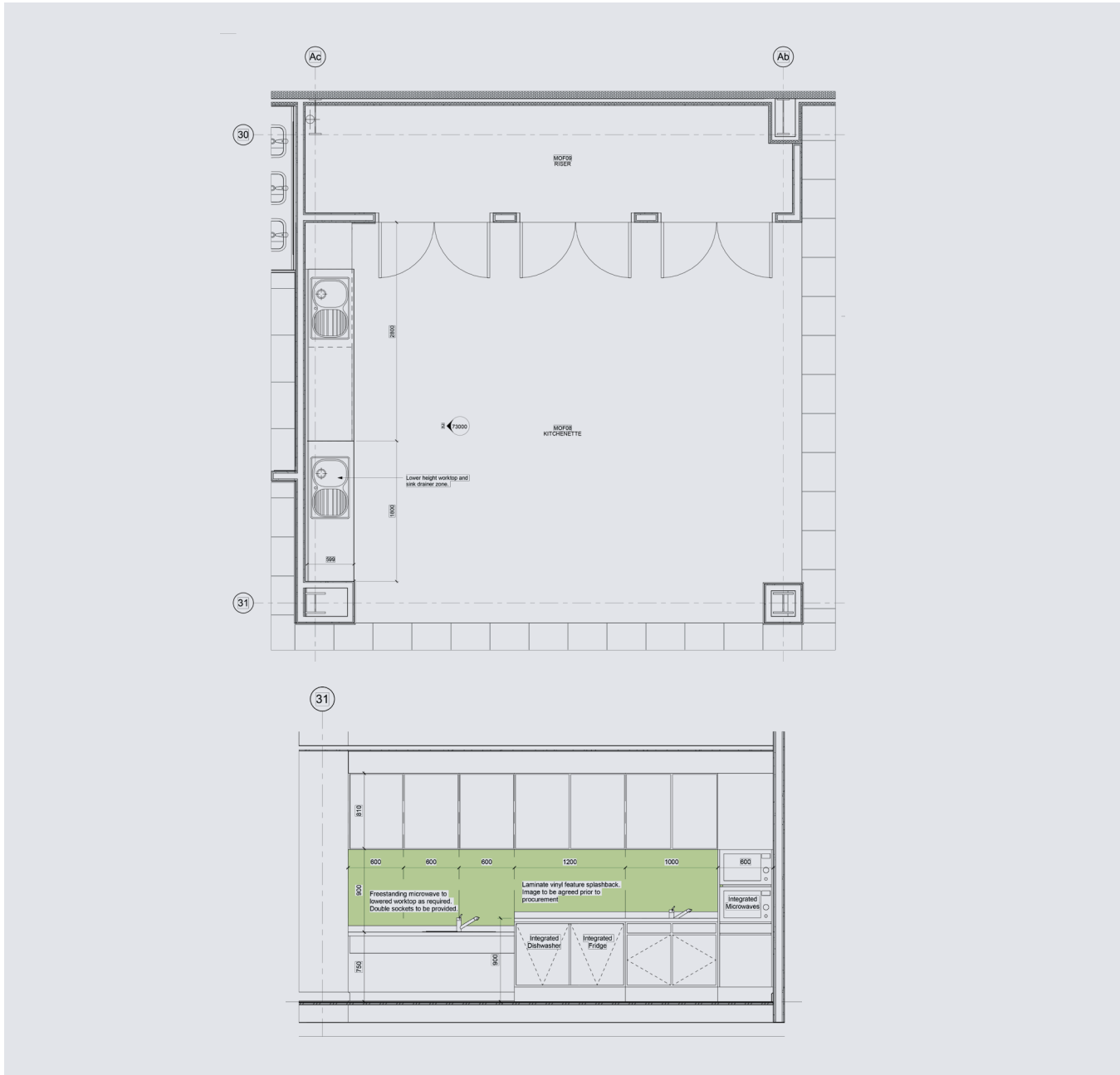


8 - OFFICE KITCHEN

OFFICE KITCHEN

Sustainability Considerations

- Ensure all finishes are selected in alignment with the WELL building standards guidance
- Kitchen space in alignment with WELL building standard guidance
- Basins and taps in kitchen areas to be designed in alignment with WELL building standard guidance
- Paints to be 0 VOC and organic if possible
- Ensure all finishes are either recycled and/or recyclable
- Low water appliances to kitchen areas to reduce water consumptions
- Consider water quality in alignment with WELL building standard guidance



Plan and Elevation

Material Finishes:

- A** Interface carpet tile Gritstone, Ref 4282005
- B** Open Acoustic ceiling with strip LED light
- C** Kitchen/Tea/Coffee stations sizes to meet project demand
- D** Earthborn EcoPro matt emulsion paint

Interface Drawn Lines



250 x 1000mm
Luxury vinyl tile:
Colour - Silver,
Ref - A00908



9

OFFICE MOOD BOARD

Note: stating optional reception dressing, to be aligned with project budget

Sustainability Considerations

- Ensure all furnishing are selected in alignment with the WELL building standards guidance



9 - OFFICE MOOD BOARD

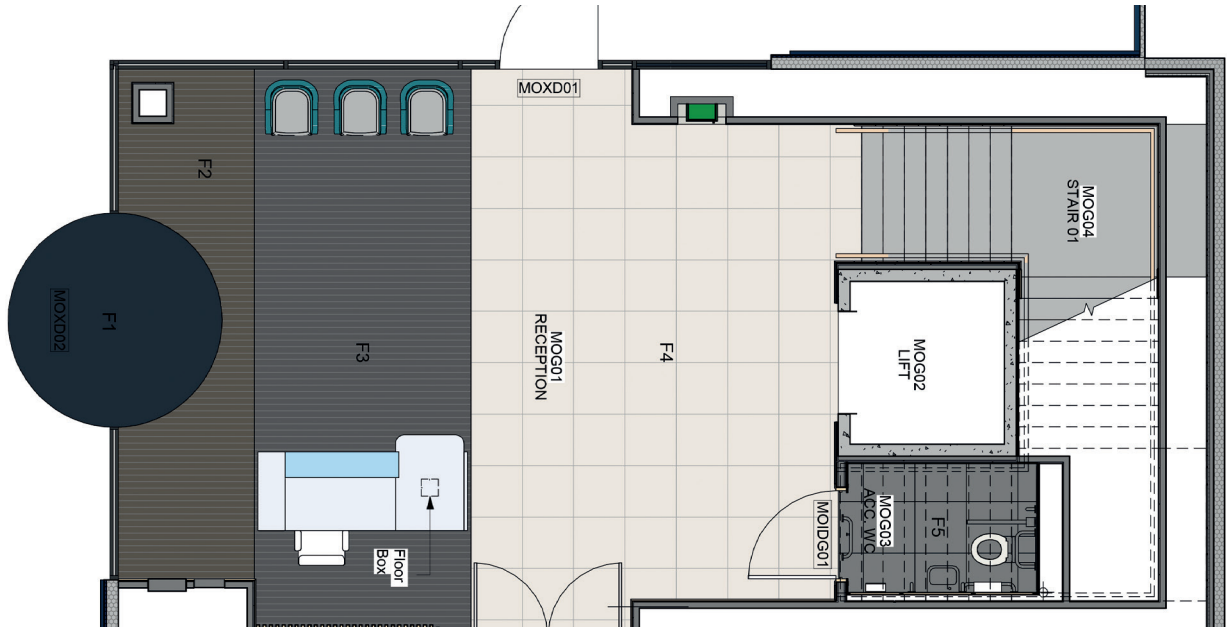
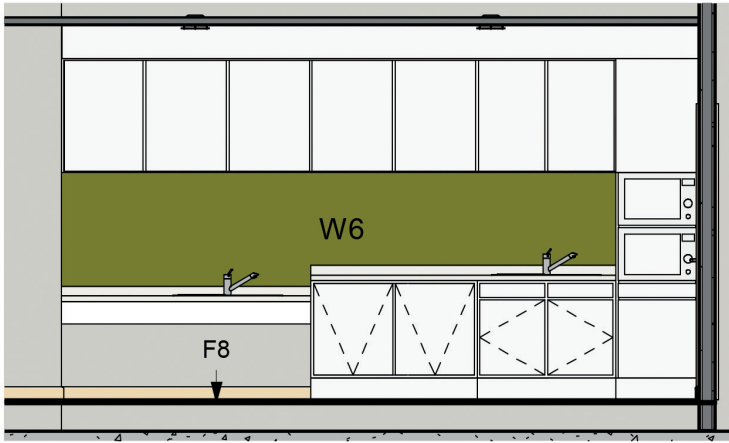
RECEPTION
MOOD BOARD

Enhanced Spec Reception

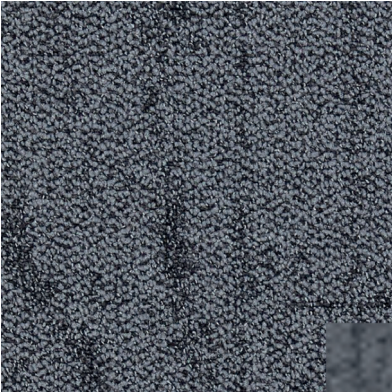
Note: All material as specified or similar approved

Sustainability Considerations

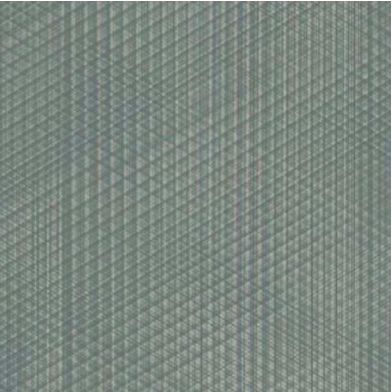
- Ensure all furnishing are selected in alignment with the WELL building standards guidance



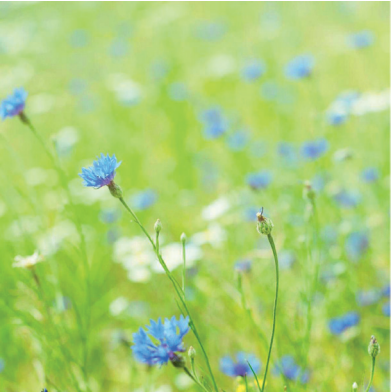
F2 - Interface Equilibrian 500x500mm Carpet Tile:
Colour - Mobility Ref - 304281



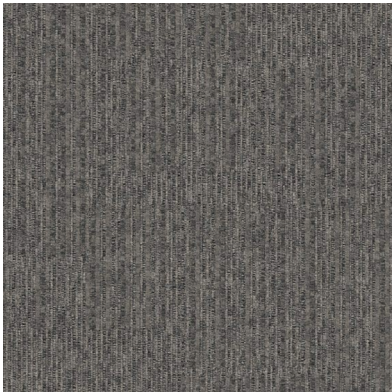
F6 - Interface Equilibrian 500x500mm Carpet Tile:
Colour - Gritstone, Ref - 4282005.
Stairs to have hi-vis non slip nosings.
Ref: Gradus Snodrift 0500-N, Gradus: Trim to match



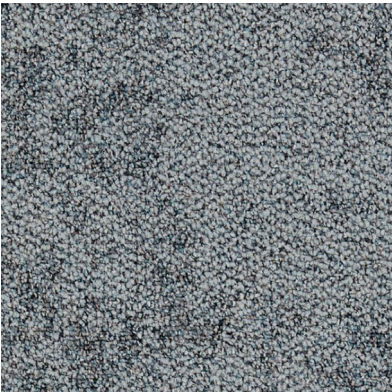
F8 - Interface Drawn Lines 250x1000mm Luxury Vinyl Tile:
Colour - Silver Ref - A00908



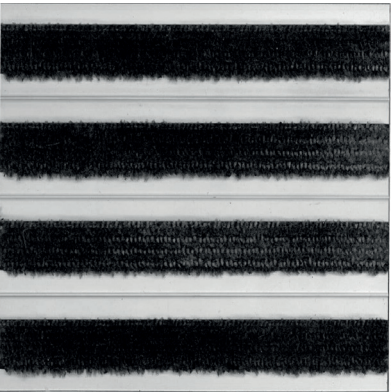
W6 - Laminate Vinyl Feature wall to kitchen.
AdobeStock_208676750.
Please Refer to separate drawings for locations and details.



F3 - Interface Equilibrian 500x500mm Carpet Tile:
Colour - Persistence Ref - 304205
(pattern to follow direction of feature wall)



F7 - Interface Icebreak 500x500mm Carpet Tile:
Colour - Chalk Ref - 4282004



F1 - 12mm "Nuway Tuftigard" Entrance barrier matting in AMF.
Colour Ref: Black with aluminium scrapers.



B1 - Window boards to be Formica Elegant Oak F5374
Laminate on 18mm MDF

D1 - F5374 Elegant OAK HPL faced solid core door with
lipping to exposed edges (Timber FSC A), Factory
applied lacquer - 3 coats

9 - OFFICE MOOD BOARD

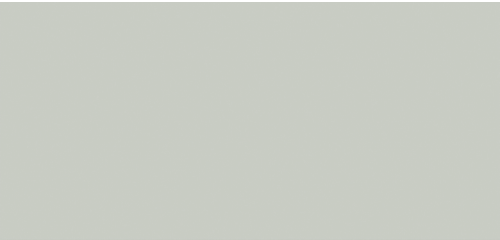
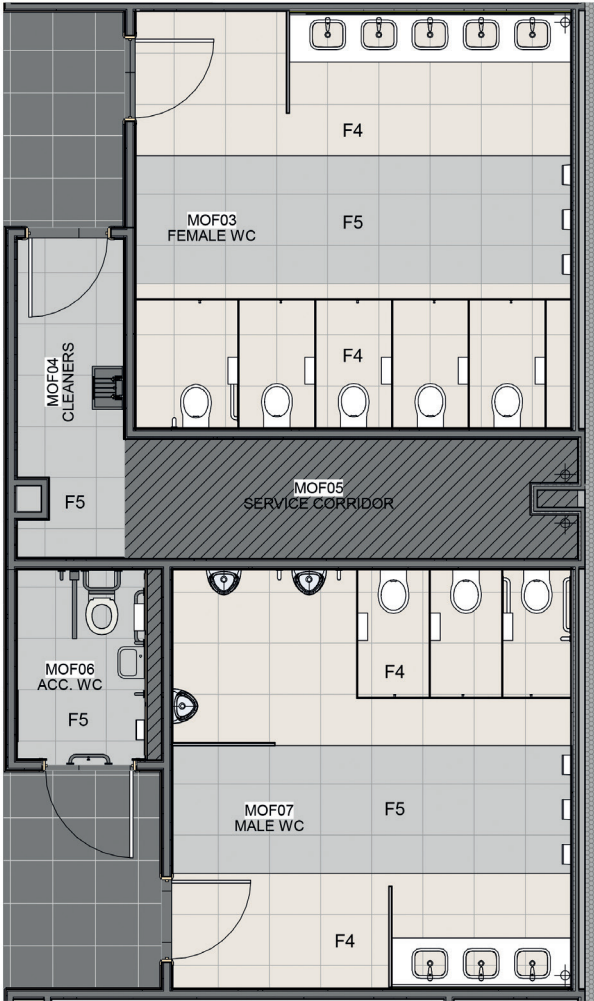
TOILET
MOOD BOARD

Enhanced Spec Toilets

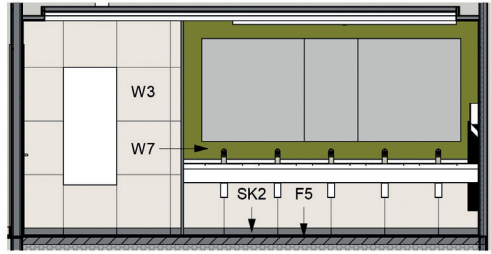
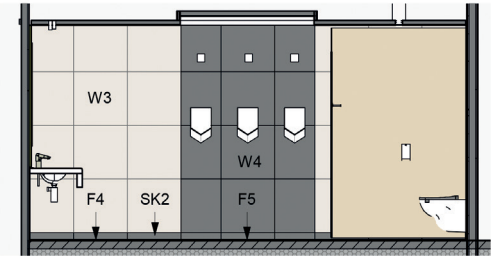
Note: All material as specified or similar approved

Sustainability Considerations

- Ensure all furnishing are selected in alignment with the WELL building standards guidance.

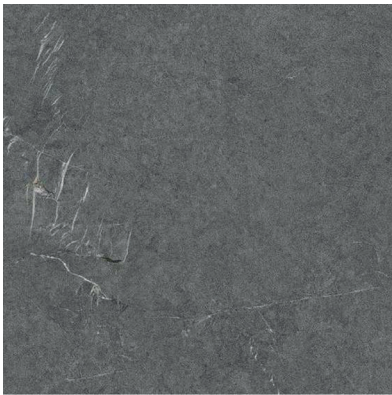


W1 - Earthborn EcoPro matt emulsion to walls.
Colour Ref: Silver BS. 00 A 01



W3 - Grespania Nize Blanco 600x600mm Wall Tile. Suitable grout colour to match tiles.

F4 - Grespania Ceramica Porcelain Stones Niza Blanco 600x600mm. Suitable grout colour to match tiles.



W3 - Grespania Nize Antarcita 600x600mm Wall Tile. Suitable grout colour to match tiles

F5 - Grespania Ceramica Porcelain Stones Niza Antarcita 600x600mm. Suitable grout colour to match tiles.

SK2 - Grespania Niza Antarcita skirting to match floor and wall tiles 600x80mm



W7 - Laminate Vinyl Feature Splashback to Female WC.
AdobeStock_212778624. Please Refer to separate drawing for location and details.



W5 - IPS high pressure laminate wall panelling system to serviced walls only. Laminate faced timber sub-frame shadow gap. Wall Panelling: Polyey - Premier Linimat C180 Chene Alba | Cubicle Doors: Polyey - Premier Brilliant G075 Gris Cendre | Cubicle Partitions and Pilasters: Polyey - Premier Linimat C180 Alba | have post formed edges and all lippings to match.



W7 - Laminate Vinyl Feature Splashback to Male WC.
AdobeStock_159570000. Please Refer to separate drawings for location and details.



SK1 - 95mm chamfered American Light Oak hardwood skirting (to match architrave profile and to be FSC approved).

L1 - Frames and architraves to be American Light Oak (Timber FSC Approved), with architrave profiles to match timber skirting.



C1 - Exposed ceiling arrangement with exposed services and hanging lights. Ceiling areas to be formed with Ecophon Solo Rectangle Acoustic Ceiling Baffles 2400x1200, 2400x600, 1800x1200 or 1800/2400x100 (Special cut)

9 - OFFICE MOOD BOARD

GLP
MEETING ROOM

Enhanced Spec Office Board Room Dressing

Note: Stating Optional office board room dressing, to be aligned with project budget

Sustainability Considerations

- Ensure all furnishing are selected in alignment with the WELL building standards guidance



10

OFFICE GLP SIGNAGE

- Layouts
- Material finishes



10 - OFFICE GLP SIGNAGE

SIGNAGE
OPTION 1

Day View and Night View

Each country has the option for the signage to be backlit or non-illuminated depending on planning scenario.

A maximum of 3 GLP signs on a building in a prominent position to also allow customers to put their logos on the building.

BRAND LOGO

Official Logo Lock-up

Horizontal Logo Lock-up

The horizontal logo version with GLP grey letter colour and triple-green symbol is the official corporate identity of GLP.

Usage Principle

Recreate or redesigning the corporate is strictly prohibited, it is required to use the official artwork from GLP Department.



Day view



Night view

10 - OFFICE GLP SIGNAGE

SIGNAGE
OPTION 2

Entrance View

Each country has the option for the signage to be backlit or non-illuminated depending on planning scenario.

A maximum of 3 GLP signs on a building in a prominent position to also allow customers to put their logos on the building.

BRAND LOGO

Official Logo Lock-up

Horizontal Logo Lock-up

The horizontal logo version with GLP grey letter colour and triple-green symbol is the official corporate identity of GLP.

Usage Principle

Recreate or redesigning the corporate is strictly prohibited, it is required to use the official artwork from GLP Department.



Day view



Night view

10 - OFFICE GLP SIGNAGE

SIGNAGE
OPTION 3

Rear Location

Each country has the option for the signage to be backlit or non-illuminated depending on planning scenario.

A maximum of 3 GLP signs on a building in a prominent position to also allow customers to put their logos on the building.

BRAND LOGO

Official Logo Lock-up

Horizontal Logo Lock-up

The horizontal logo version with GLP grey letter colour and triple-green symbol is the official corporate identity of GLP.

Usage Principle

Recreate or redesigning the corporate is strictly prohibited, it is required to use the official artwork from GLP Department.



Day view



Night view

10 - OFFICE GLP SIGNAGE

SIGNAGE DETAILS
OPTION 1

A maximum of 3 GLP signs on a building in a prominent position will also allow customers to put their logos on the building.

Please note:
GLP primary logo does not use Lato black.

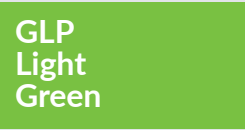
LOGO INFORMATION

Coloured acrylic face and 100mm deep returns to individual letters fixed to aluminium backplates with suitable corrosion resistance through cladding fixings to cold rolled supports if necessary.

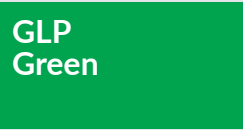
Coloured acrylic face and 50mm deep returns to arc shapes fixed to aluminium backplates with suitable corrosion resistance through cladding fixings to cold rolled supports if necessary.

Complete with option to internally illuminate (LEDs to illuminate faces and returns) if required.

COLOUR PALLETTE



P376C
C57 M0 Y100 K0
R130 G188 B0



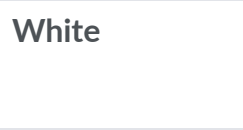
P355C
C96 M4 Y100 K0
R0 G149 B58



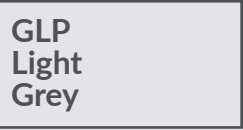
P342C
C95 M32 Y79 K26
R0 G102 B71



P425C
C62 M50 Y47 K40
R85 G87 B89



C0 M0 Y0 K0
R255 G255 B255



P COOL GREY 1C
C10 M7 Y5 K0
R233 G232 B231



10 - OFFICE GLP SIGNAGE

SIGNAGE DETAILS
OPTION 2

A maximum of 3 GLP signs on a building in a prominent position to also allow customers to put their logos on the building.

Please note:
GLP primary logo does not use Lato black.

Sign to be located just below parapet level and on the corner of building.

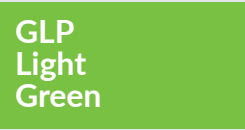
LOGO INFORMATION

Coloured acrylic face and 100mm deep returns to individual letters fixed to aluminium backplates with suitable corrosion resistance through cladding fixings to cold rolled supports if necessary.

Coloured acrylic face and 50mm deep returns to arc shapes fixed to aluminium backplates with suitable corrosion resistance through cladding fixings to cold rolled supports if necessary.

Complete with option to internally illuminate (LEDs to illuminate faces and returns) if required.

COLOUR PALLETTE



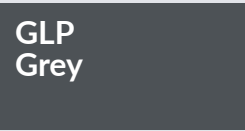
P376C
C57 M0 Y100 K0
R130 G188 B0



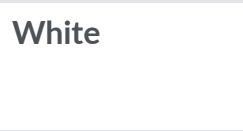
P355C
C96 M4 Y100 K0
R0 G149 B58



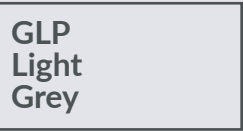
P342C
C95 M32 Y79 K26
R0 G102 B71



P425C
C62 M50 Y47 K40
R85 G87 B89



C0 M0 Y0 K0
R255 G255 B255



P COOL GREY 1C
C10 M7 Y5 K0
R233 G232 B231



10 - OFFICE GLP SIGNAGE

TOTEM SIGN

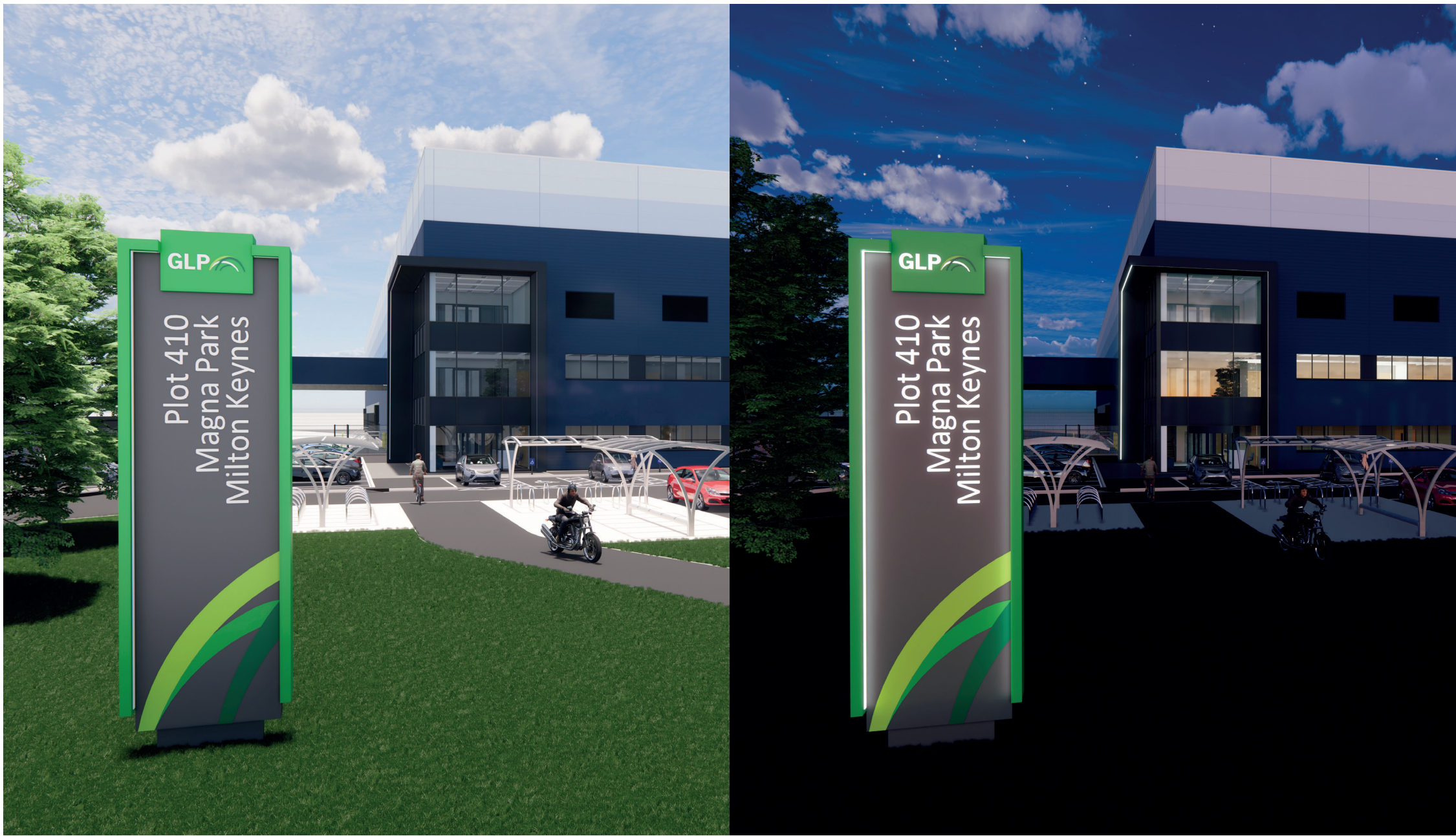
Totem poles should be installed at the site entry where possible.

Integrated LED strip in recess to projecting frame.

Double-sided free-standing powder-coated aluminium totem sign. Support to be aluminium clad and calculated along with founds, by struct. engineer.

A maximum of 3 GLP signs on a building in a prominent position will also allow customers to put their logos on the building.

TOTEM POLE INFORMATION



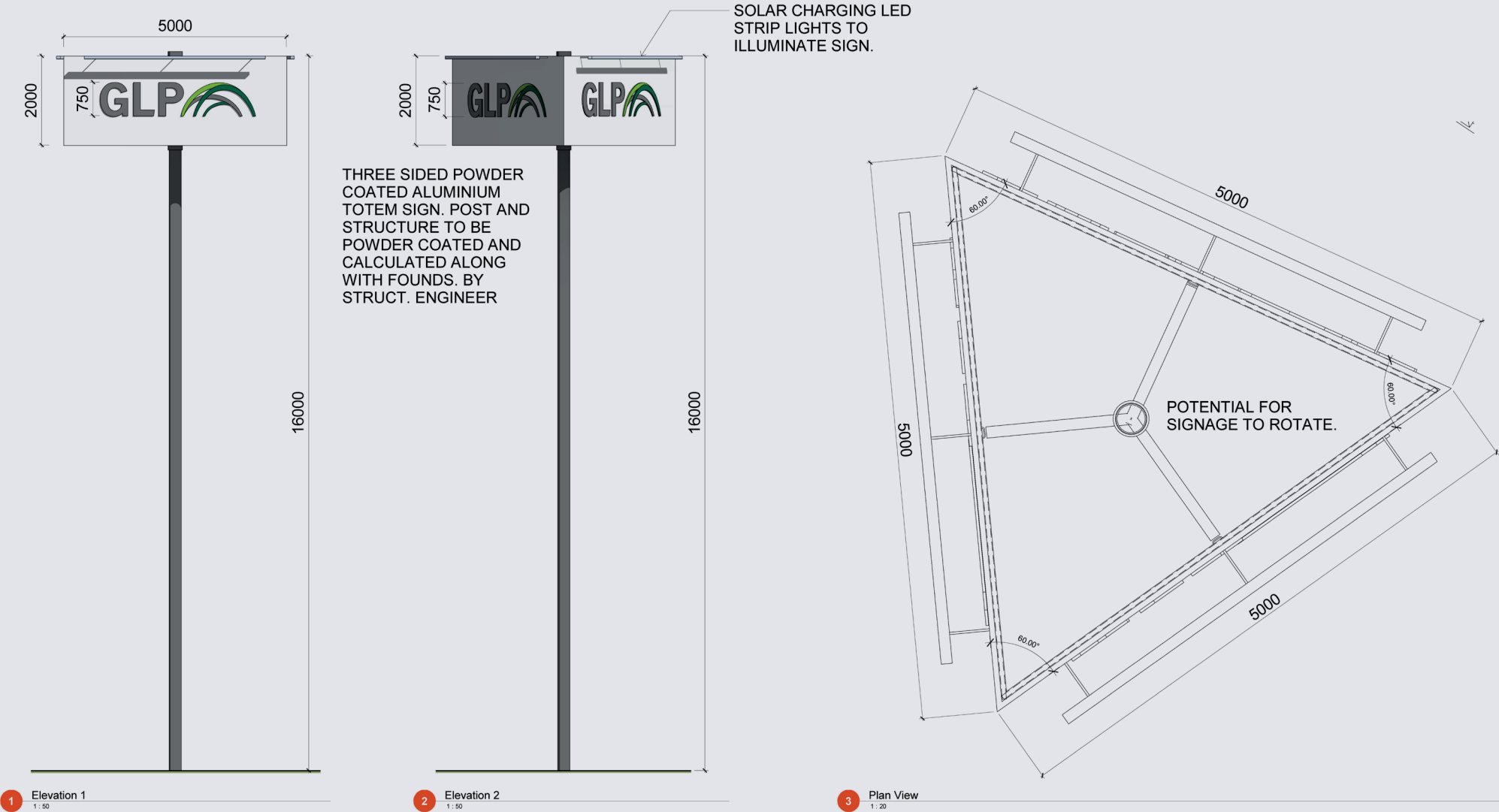
10 - OFFICE GLP SIGNAGE

LARGE
TOTEM

Totem poles should be installed at the site entry where possible.

Solar charging LED strip lights to illuminate sign.

Three-sided powder-coated aluminium totem sign. Post and structure to be powder coated calculated along with founds, by struct. engineer.



10 - OFFICE GLP SIGNAGE

MONOLITH SIGN

The sample to the right illustrates the basic principles and proportions of a monolith.

Monoliths signal the entrance of our sites. They should be placed only at main entrances where we expect visitors and deliveries to come and can be welcomed.

They are mainly to display the location and should have the minimum amount of information with supporting GLP branding.

It is recommended that, with appropriate lead time, monoliths be pre-approved by the core support team prior to production.

It is understood that varying circumstances may require content size to be adjusted to accommodate longer and/or shorter addresses. Please consult with core support should this be the case.

Dimensions:
1500x5000mm

GRAPHIC ELEMENTS

Composition Principles

GLP's graphic system us built around their distinctive curves from the logo symbol. There are various way to create a graphic expression:

RGB values are for digital use, CMYK values are from print usage.

Note: Crops of the logo system elements. Cropped areas represent approved colours. Shaded area only to show how graphics are created from original assets.



ROADSIDE
SIGN

The sample to the right illustrates the basic principles and proportions of a roadside sign.

Roadside signs signal both the name of the road and the park name with supporting GLP branding.

It is recommended that, with appropriate lead time, roadside signs be pre-approved by the core support team prior to production.

It is understood that varying circumstances may require content size to be adjusted to accommodate longer and/or shorter addresses. Please consult with core support should this be the case.

Dimensions:
1500x1250mm

GRAPHIC ELEMENTS

Composition Principles

GLP's graphic system us built around their distinctive curves from the logo symbol. There are various way to create a graphic expression:

RGB values are for digital use, CMYK values are from print usage.

Note: Crops of the logo system elements. Cropped areas represent approved colours. Shaded area only to show how graphics are created from original assets.



GLP

Harrier Parkway

Magna Park Central,
Lutterworth

GLP

1 line Lato Black 290pt
2 line Lato Black 290pt

← 1 line Lato Bold 230pt
→ 2 line Lato Bold 230pt

10 - OFFICE GLP SIGNAGE

CUSTOMER
ENTRANCE SIGN

The sample to the right illustrates the basic principles and proportions of a Customer entrance sign.

Customer entrance signs signal both the name of the customer or customers and directional signage (i.e., Car Park with supporting GLP branding).

It is recommended that, with appropriate lead time, customer entrance signs be pre-approved by the core support team prior to production.

It is understood that varying circumstances may require content size to be adjusted to accommodate longer and/or shorter addresses. Please consult with core support should this be the case.

Dimensions:
1500x1500mm

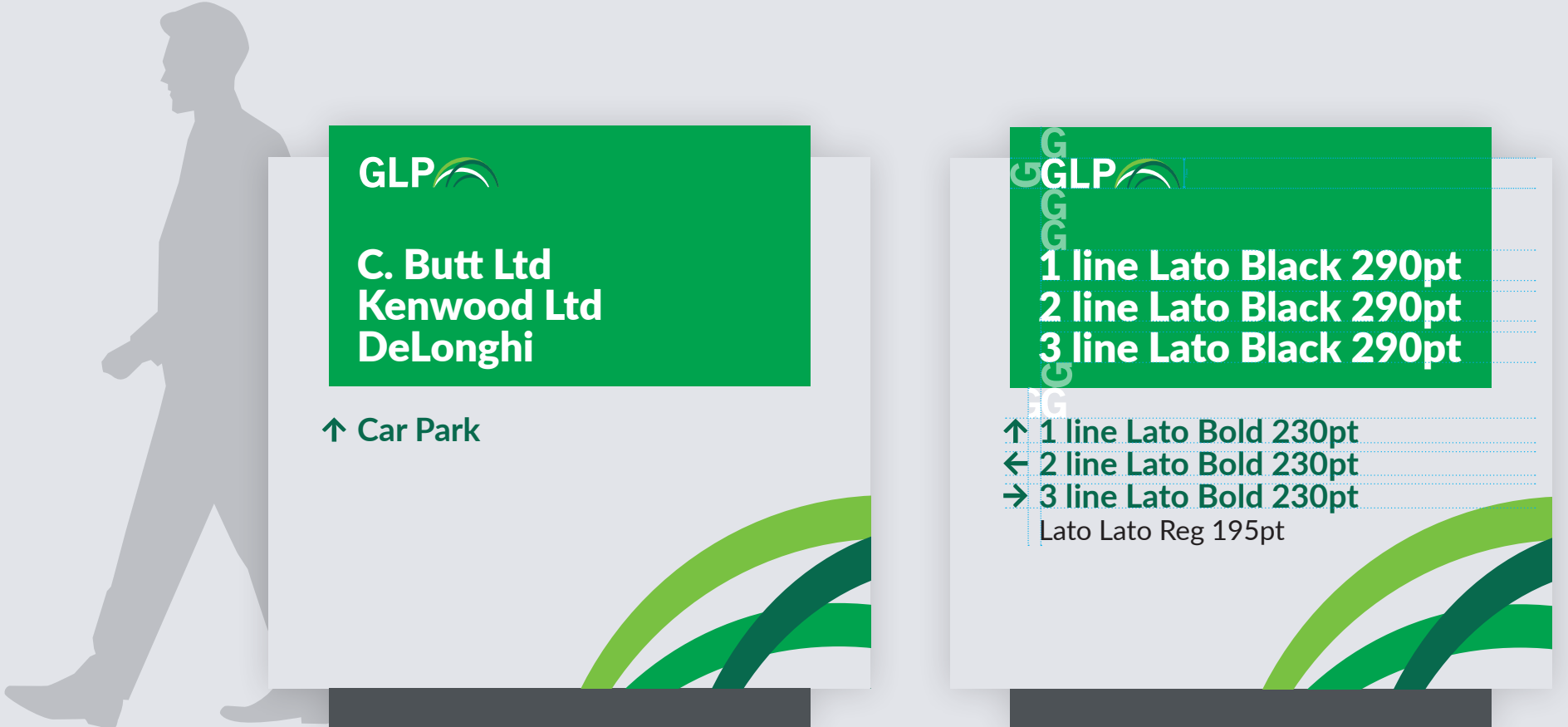
GRAPHIC ELEMENTS

Composition Principles

GLP's graphic system us built around their distinctive curves from the logo symbol. There are various way to create a graphic expression:

RGB values are for digital use, CMYK values are from print usage.

Note: Crops of the logo system elements. Cropped areas represent approved colours. Shaded area only to show how graphics are created from original assets.



10 - OFFICE GLP SIGNAGE

CUSTOMER
ENTRANCE SIGN

The sample to the right illustrates the basic principles and proportions of a Customer entrance sign.

Customer entrance signs signal both the name of the customer or customers and directional signage (i.e., Car Park with supporting GLP branding).

It is recommended that, with appropriate lead time, customer entrance signs be pre-approved by the core support team prior to production.

It is understood that varying circumstances may require content size to be adjusted to accommodate longer and/or shorter addresses. Please consult with core support should this be the case.

Dimensions:
1500x2000mm

GRAPHIC ELEMENTS

Composition Principles

GLP's graphic system us built around their distinctive curves from the logo symbol. There are various way to create a graphic expression:

RGB values are for digital use, CMYK values are from print usage.

Note: Crops of the logo system elements. Cropped areas represent approved colours. Shaded area only to show how graphics are created from original assets.



GLP

Disney Store

Plot 4300
← All vehicles

Magna Park Central,
Lutterworth

GLP

1 line Lato Black 290pt
2 line Lato Black 290pt
3 line Lato Black 290pt

↑ 1 line Lato Bold 230pt/230pt
← 2 line Lato Bold 230pt/230pt
→ 3 line Lato Bold 230pt/230pt
Lato Lato Reg 195pt/230pt
Lato Lato Reg 195pt/230pt

10 - OFFICE GLP SIGNAGE

TOWER SIGN

The sample to the right illustrates the basic principles and proportions of a tower sign.

Tower signs signal both the name of the customer or customers and directional signage. (i.e., Car park with supporting GLP branding).

It is recommended that, with appropriate lead time, tower signs be pre-approved by the core support team prior to production.

It is understood that varying circumstances may require content size to be adjusted to accommodate longer and/or shorter addresses. Please consult with core support should this be the case.

Dimensions:
1500x2750mm

GRAPHIC ELEMENTS

Composition Principles

GLP's graphic system us built around their distinctive curves from the logo symbol. There are various way to create a graphic expression:

RGB values are for digital use, CMYK values are from print usage.

Note: Crops of the logo system elements. Cropped areas represent approved colours. Shaded area only to show how graphics are created from original assets.



Livraisons

- Entrée voitures
- ⊘ Camions interdit
- ↑ Entrée camions à 50 mètres



1 line Lato Black 290pt
2 line Lato Black 290pt
3 line Lato Black 290pt

- ↑ 1 line Lato Bold 230pt/230pt
- ← 2 line Lato Bold 230pt/230pt
- 3 line Lato Bold 230pt/230pt
- Lato Lato Reg 195pt/230pt
- Lato Lato Reg 195pt/230pt

10 - OFFICE GLP SIGNAGE

ROADSIDE
SIGNAGE

Please use the sample sign on the right for basic principles and proportions, it should be used as a visual.

Note: Font sizes is dependant on the amount of information, fill proportionately.

Dimensions:
1150x2400mm

GRAPHIC ELEMENTS

Composition Principles

GLP's graphic system us built around their distinctive curves from the logo symbol. There are various way to create a graphic expression:

RGB values are for digital use, CMYK values are from print usage.

Note: Crops of the logo system elements. Cropped areas represent approved colours. Shaded area only to show how graphics are created from original assets.



10 - OFFICE GLP SIGNAGE

CUSTOMER LOGOS

Outdoor fascia branding

Customer logos have been given specific areas within the architecture of the building. The size of the customer logo must be carefully considered in proportion to the space provided for branding.

The quantity of customer logos required for each building should be carefully considered with regard to its position to main roads and other advantage points.



LOGO USAGE

Please make sure you adhere to your customer's brand and logo guidelines.

In the scenario where the customer requests two logos on the building, there is a maximum amount of 2 GLP logos permitted. The number of logos on the building must not exceed a combined total of four.



10 - OFFICE GLP SIGNAGE

BILLBOARD
SIGNAGE

The sample to the right illustrates the basic principles and proportions of a construction site sign; it should be used as a visual guide.

SITE BILLBOARD LEASING SIGN

Keep the following in mind when gathering content for leasing signage:

- Your sign is essentially a billboard - less is more
- Font size is dependent upon the amount of information provided. The more information, the smaller the font size
- Use text and appropriate infographics only; save photography for brochures and other printed materials

It is understood that varying circumstances may require different content and/or information to be displayed, or a size be created other than the standard sizes listed below.

Standard sizes:
6x3m, 6x4m, 16x8m and 20x10m

Vertical posts:
Vertical posts should be painted black. Post height should comply with local codes and regulations.

1

2

3

4

5

50mm

170mm

95mm

80mm

78mm

25mm

275mm

105mm

137mm

Magna Park South, Lutterworth

4 new speculative units

98,000, 126,000, 300,000 and 746,000 SQ FT

Build-to-suit opportunities up to 5 M SQ FT

GLP

Bruce Topley

020 7901 4467

GLP

Olivia Hinds

020 7901 4463

DTRE

020 3328 9080

www.dtre.com

BurbageRealty

expert advice

01604 232555

Conduit House Northampton NN1 1JF

Coming soon

GLP

glp.com/eu

6

7

8

9

Recommended spec for 6m x 3m

- | | | | |
|---|--|---|---|
| 1. Headline
Lato Black 520pt
GLP Green | 4. GLP Logo
Always use provided artwork; never recreate the logo under any circumstance. | 5. GLP Logo
Always use provided artwork; never recreate the logo under any circumstance. | 8. Graphic element
See page 26 for composition principles |
| 2. Subtitle
Lato Bold 280pt/315pt
GLP Dark Green | 4. Contact name
Lato Bold 150pt/225pt
GLP Grey | 6. Background colour
GLP Light Grey | 9. Web address
Lato Bold 250 pt
White |
| 3. Subtitle
Lato Regular 190pt
GLP Dark Green | 4. Contact number
Lato Bold 190pt/225pt
Lato Bold
GLP Grey | 7. Disturber circle
Lato Black 360pt/360pt
GLP Green
610mm diameter
Effect: Multiply | |

FLAGS

The sample to the right illustrates the basic principles and proportions of a flag.

Flags signal the entrance of a newly constructed building, and are used in conjunction with marketing campaigns. They should be placed only at main entrances where we expect visitors to come and can be welcomed.

They are mainly to display the location with brand and should have the minimum amount of information with supporting GLP branding.

OVERLAP OF PRIMARY COLOURS

The updated GLP brand utilises circles to create a powerful visual language. The below colour impressions appear when GLP corporate colours are overlapping within a layout.

Note: The additional set of greens generated by the ‘overlap’ should not directly be used when creating new GLP materials. The ‘multiply’ effect is used for screen based work, while the additional cmyk and Pantone® colours are used for traditional print and production to replicate the new graphic look.

GLP LIGHT GREEN	GLP GREEN	GLP DARK GREEN
GLP OVERLAY COLOUR 1 PANTONE® 348C C: 92 M: 27 Y: 100 K: 18 RGB: Use 'multiply' effect	GLP OVERLAY COLOUR 2 PANTONE® 2408C C: 95 M: 36 Y: 100 K: 36 RGB: Use 'multiply' effect	GLP OVERLAY COLOUR 3 PANTONE® 553C C: 90 M: 49 Y: 96 K: 60 RGB: Use 'multiply' effect
GLP GREEN	GLP GREEN	GLP GREEN



COMPOUND
SIGNAGE

400x400mm

- 1. **Headline:**
Lato Black 157/157pt GLP Green
- 2. **Background colour:**
GLP Light Grey
- 3. **GLP logo:**
Always use provided artwork; never recreate
- 4. **Graphic element:**
Please see page 26 for composition details
- 5. **Web address:**
Lato Bold 60pt White

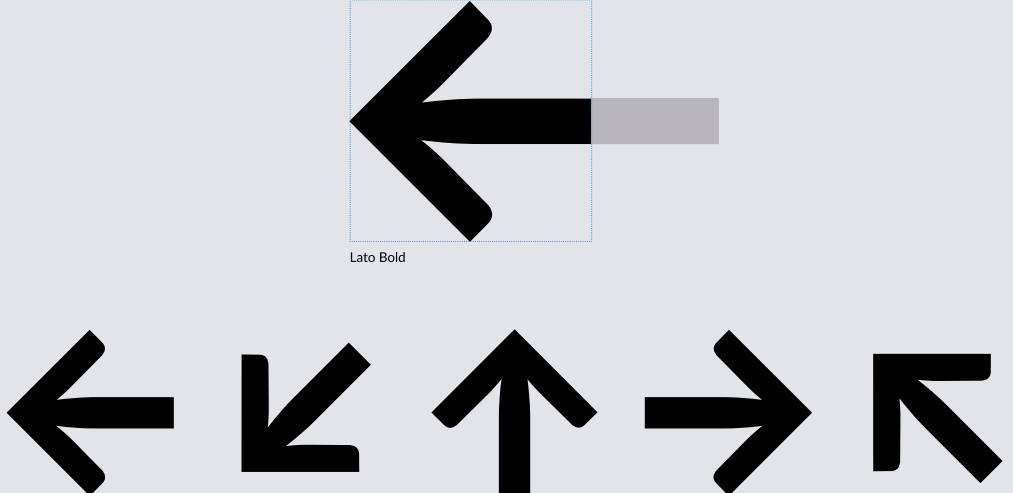
DIRECTIONAL ARROWS

Primary Arrow

GLP's signage guidelines include directional arrows taken from GLP's corporate typeface, Lato.

The arrow can be rotated by increments of 45°, it is necessary to crop the arrow.

Note: Cropped areas represent approved colours. Shaded area only represents how the graphic is created from the original asset.



10 - OFFICE GLP SIGNAGE

COMPOUND
SIGNAGE

600x600mm

- 1. **Headline:**
Lato Black 236/236pt GLP Green
- 2. **Subtitle:**
Lato Bold 127/127pt GLP Dark Grey
- 3. **Background colour:**
GLP Light Grey
- 4. **GLP logo:**
Always use provided artwork; never recreate
- 5. **Graphic element:**
Right
- 6. **Web address:**
Lato Bold 60pt White

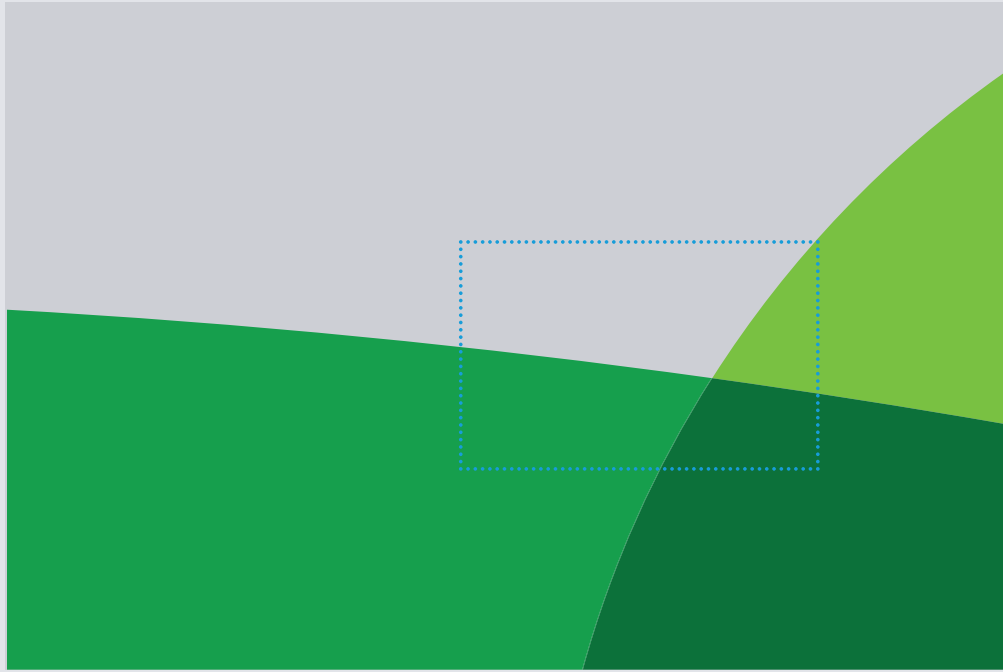
GRAPHIC ELEMENTS

Composition Principles

GLP's graphic system us built around their distinctive curves from the logo symbol. There are various way to create a graphic expression:

RGB values are for digital use, CMYK values are from print usage.

Note: Crops of overlapping circles, derived from the logo symbol. Cropped areas represent approved colours. Shaded area only to show how graphics are created from original assets.



COMPOUND
SIGNAGE

750x500mm

- 1. Background colour:
GLP Light Grey
- 2. GLP logo:
Always use provided artwork; never recreate
- 3. Graphic element:
Please see page 36 for composition details
- 4. Web address:
Lato Bold 72pt White

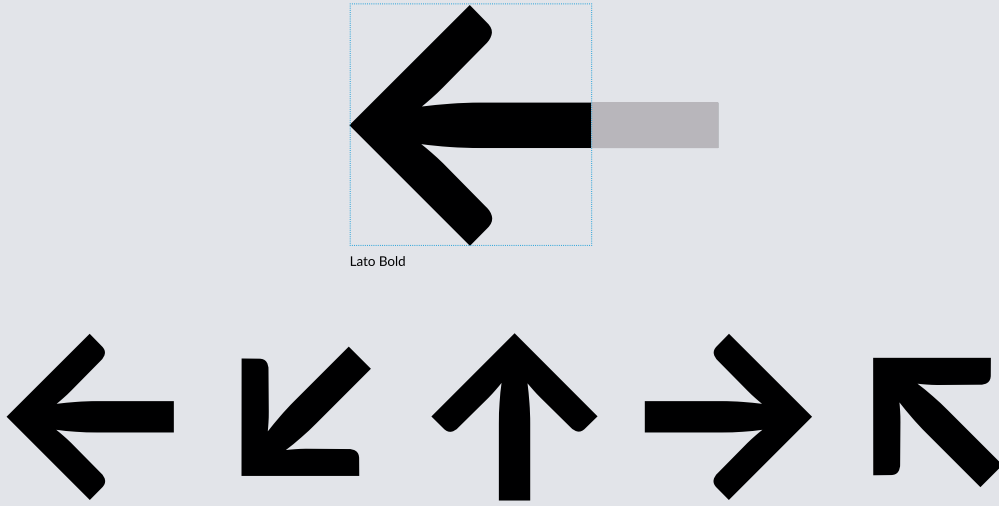
DIRECTIONAL ARROWS

Primary Arrow

GLP's signage guidelines include directional arrows taken from GLP's corporate typeface, Lato.

The arrow can be rotated by increments of 45°, it is necessary to crop the arrow.

Note: Cropped areas represent approved colours. Shaded area only represents how the graphic is created from the original asset.



10 - OFFICE GLP SIGNAGE

ENDS
OF CABINS

2000x600mm

- 1. Background colour:
GLP Light Grey
- 2. GLP logo:
Always use provided artwork; never recreate
- 3. Graphic element:
Right

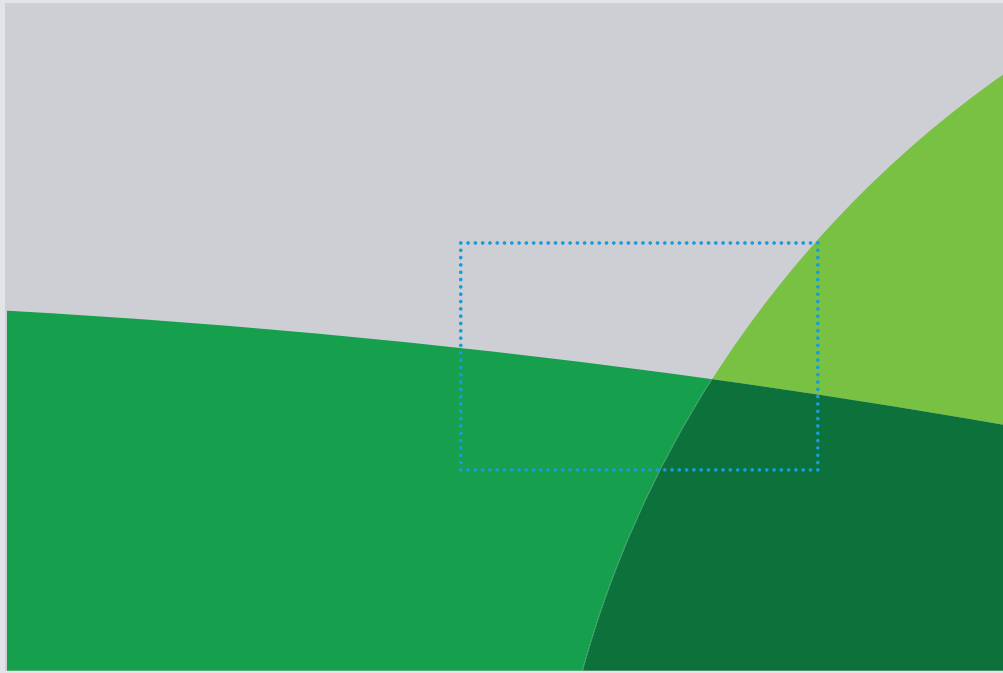
GRAPHIC ELEMENTS

Composition Principles

GLP's graphic system us built around their distinctive curves from the logo symbol. There are various way to create a graphic expression:

RGB values are for digital use, CMYK values are from print usage.

Note: Crops of overlapping circles, derived from the logo symbol. Cropped areas represent approved colours. Shaded area only to show how graphics are created from original assets.



10 - OFFICE GLP SIGNAGE

CONCRETE
BARRIER BLOCKS

If anti-access barriers, security blocks are necessary then branded covers must be specified.

2750x1500mm

Background colour:

GLP Dark Green

Logo/Font:

Always use provided artwork; never recreate
Lato Black - White

REQUIREMENTS

The use of GLP branded covers has now become common place to go over all rectangular concrete security blocks deployed around sites.

The specification for these is currently controlled by WAE (Neil Smith).

Decisions regarding the volume and position of these blocks to be agreed between the GLP PM and contractor in light of security/protection requirements.



G-Park Milton Keynes



GLP | glp.com/eu

11

FRANCE

- Le Havre, Gonfreville
- Rouen
- SMC 4 and 5, Thominiere



11 - FRANCE

LE HAVRE,
GONFREVILLE

- 3 Storey Offices
- 2 Office Cladding Colours
- End Office Main Entrance
- Wide Office Footprint



ROUEN

- 2 Storey Offices
- 2 Office Cladding Colours
- End Office Main Entrance
- Wide Office Footprint



11 - FRANCE

SMC 4 AND 5, THOMINIERE

- 2 Storey Offices
- 2 Office Cladding Colours
- Mid Office Feature
- Wide Office Footprint



12

GERMANY

- Berlin
- Jena
- Kaiserlautern
- Dortmund



BERLIN



JENA

- 2 Storey Offices
- 1 Office Cladding Colour
- Mid Office Main Entrance
- Wide Office Footprint



KAISERLAUTERN



DORTMUND



13

NETHERLANDS

- Lelystad
- Venray
- Zevenaar



13 - NETHERLANDS

LELYSTAD

- 2 Storey Offices
- 1 Office Cladding Colour
- Feature Office Window Details
- Large Curtain Walling Area



13 - NETHERLANDS

VENRAY

- 2 Storey Offices
- 1 Office Cladding Colour
- Offices Above Docks
- Large Curtain Walling Area



13 - NETHERLANDS

ZEVENAAR

- 2 Storey Offices
- 1 Office Cladding Colour
- Feature Office Window Details
- Large Curtain Walling Area



14

ITALY

- Valsamoggia



VALSAMOGGIA

- 2 Storey Offices
- 1 Office Cladding Colour
- Feature Entrance Window Detail
- Inboard Offices



15

POLAND

- Annopol
- Łódź West
- Łódź East
- Rzeszów
- Warsaw Bronisze



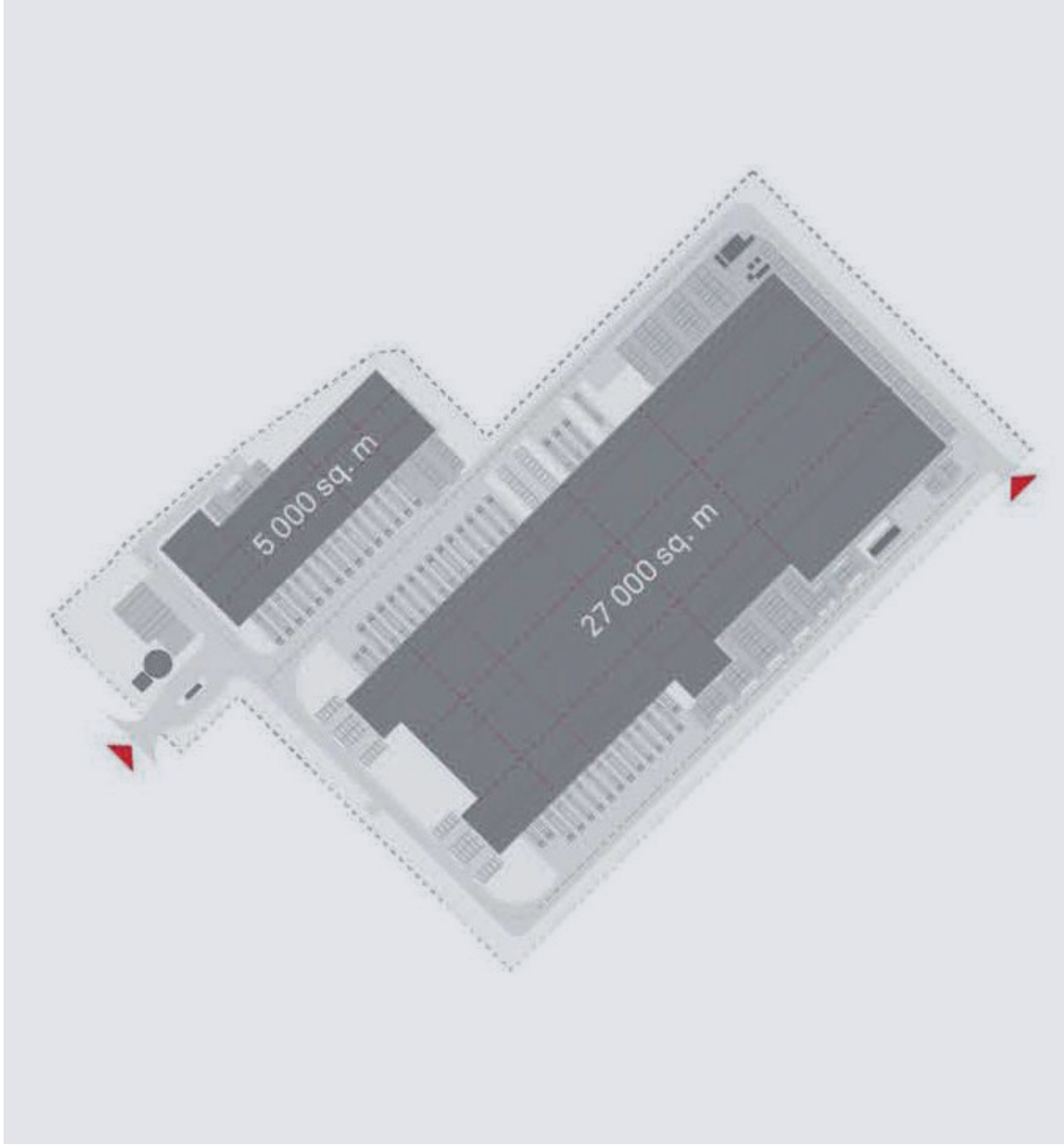
ANNOPOL

- 2 Storey Offices
- 1 Office Cladding Colour
- Feature Entrance Window Detail
- Inboard Offices



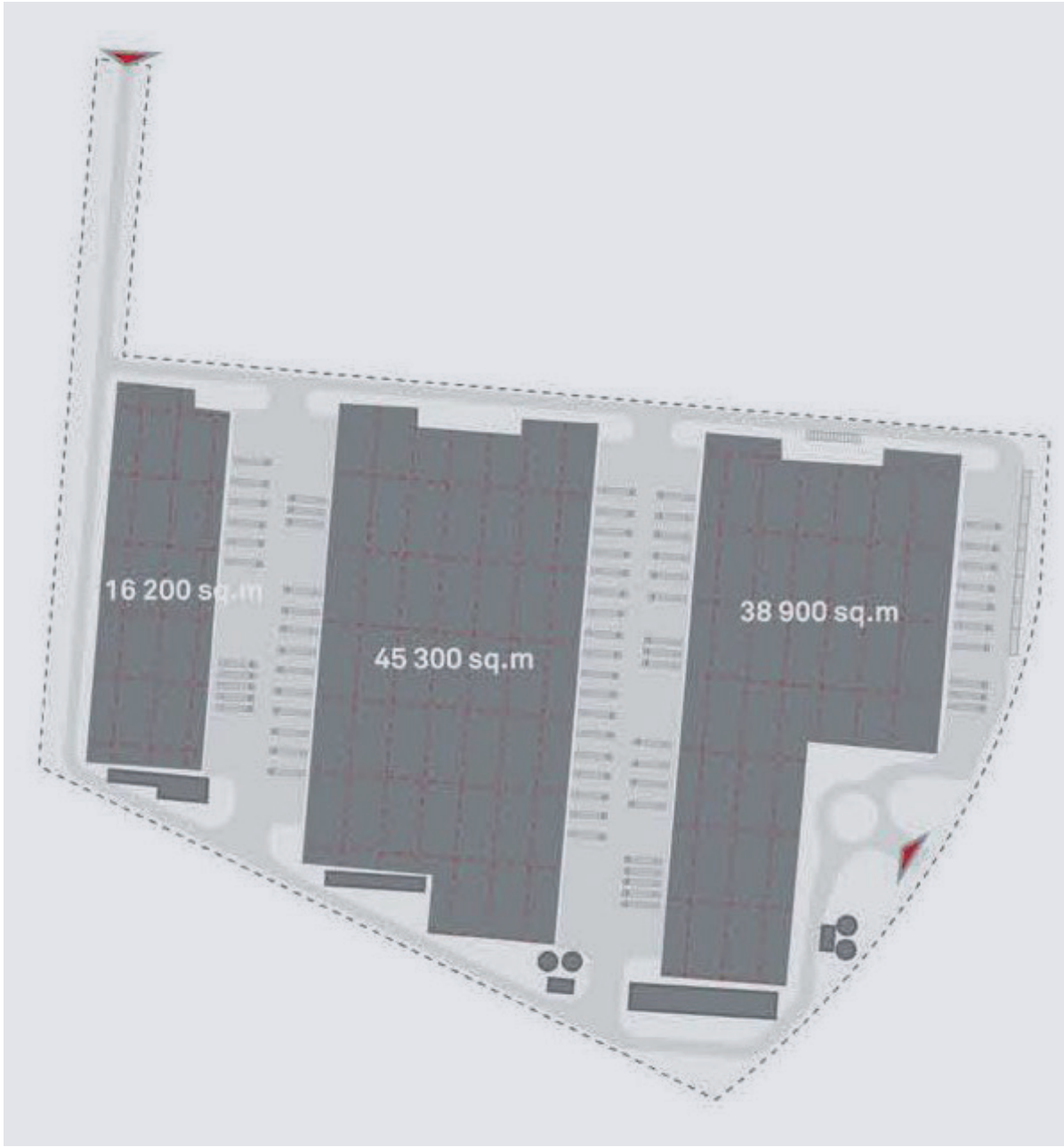
ŁÓDŹ WEST

- 2 Storey Offices
- 1 Office Cladding Colour
- Standard Office Width
- Outboard Offices



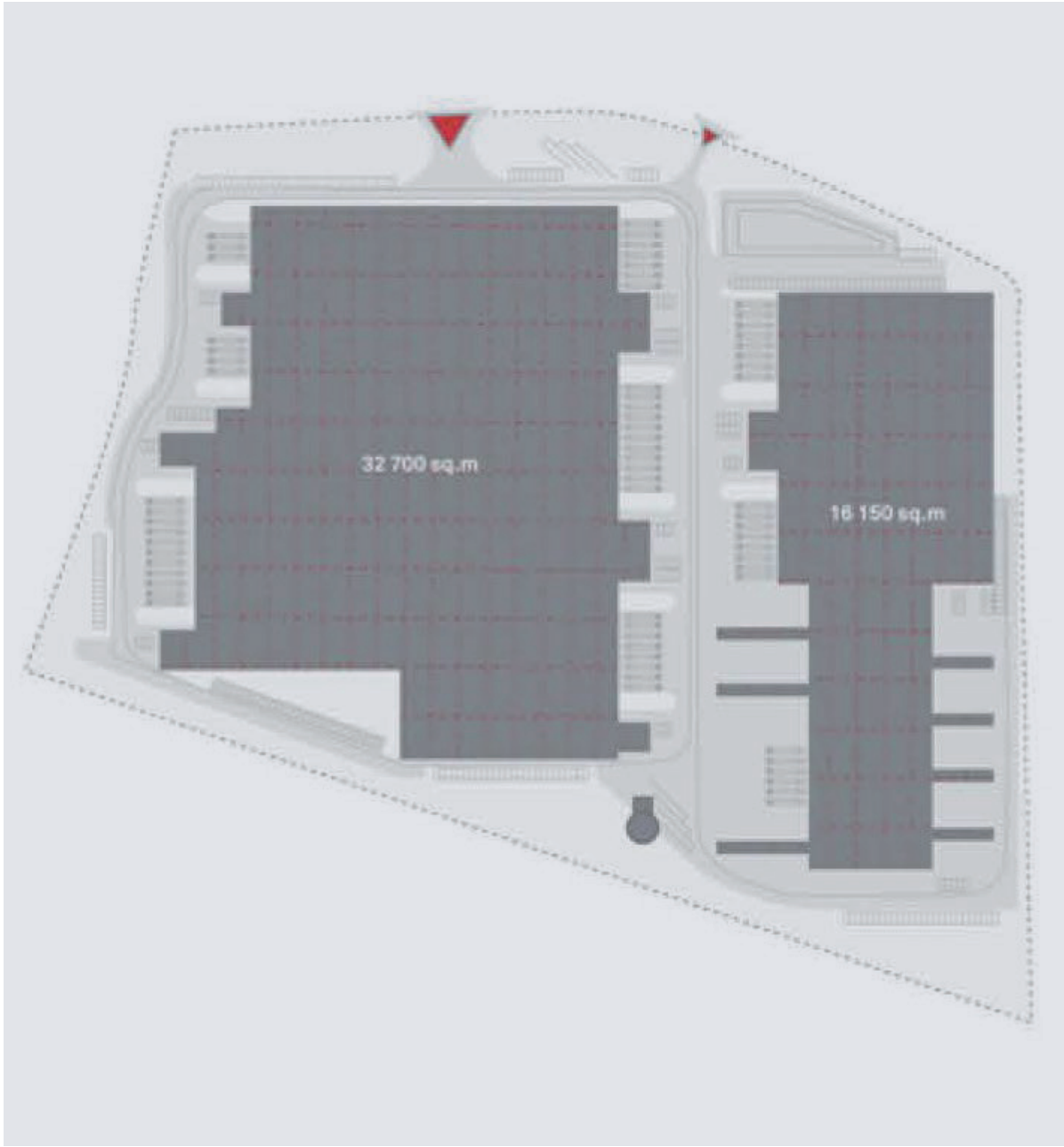
ŁÓDŹ EAST

- 2 Storey Offices
- 1 Office Cladding Colour
- Standard Office Width
- Outboard Offices

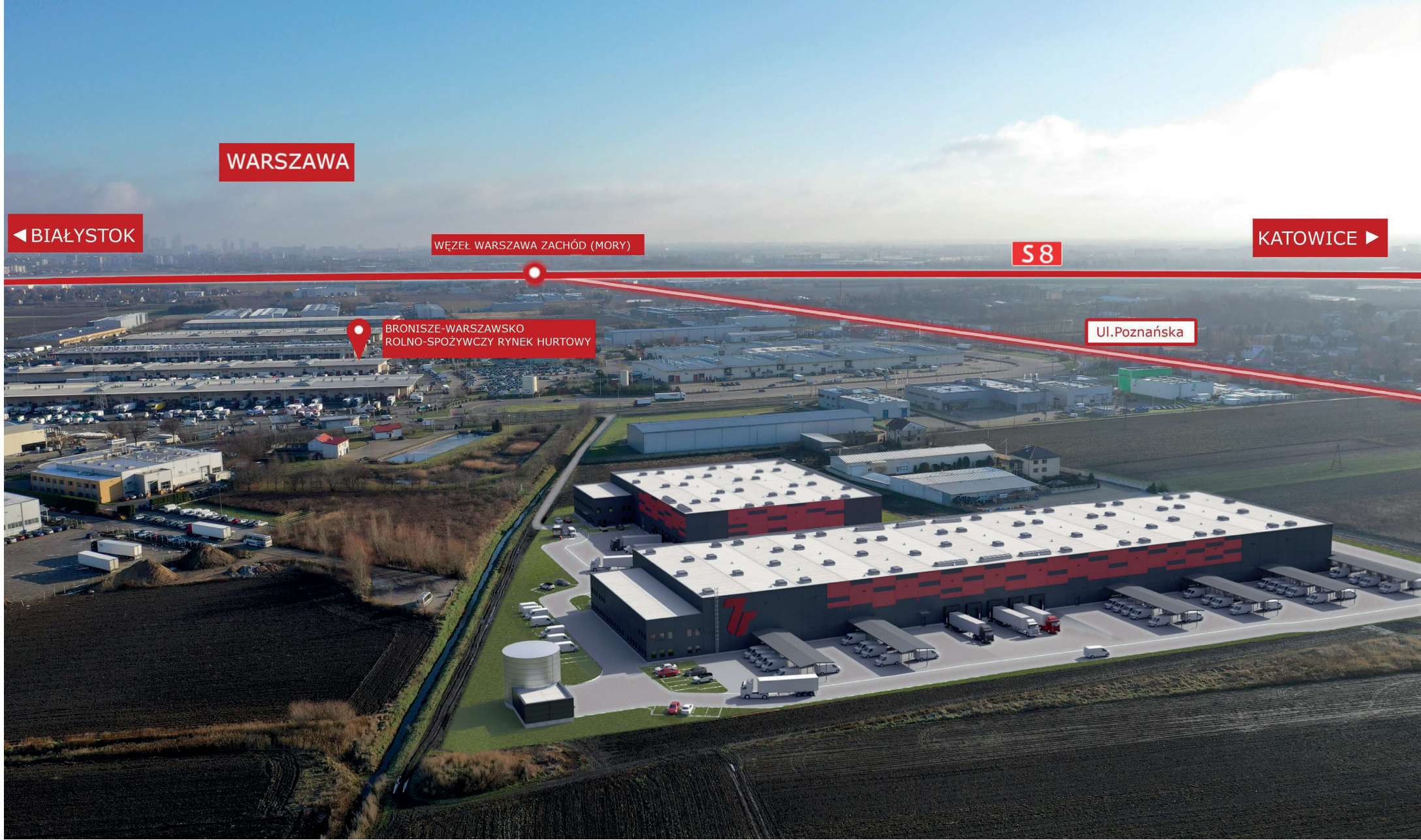
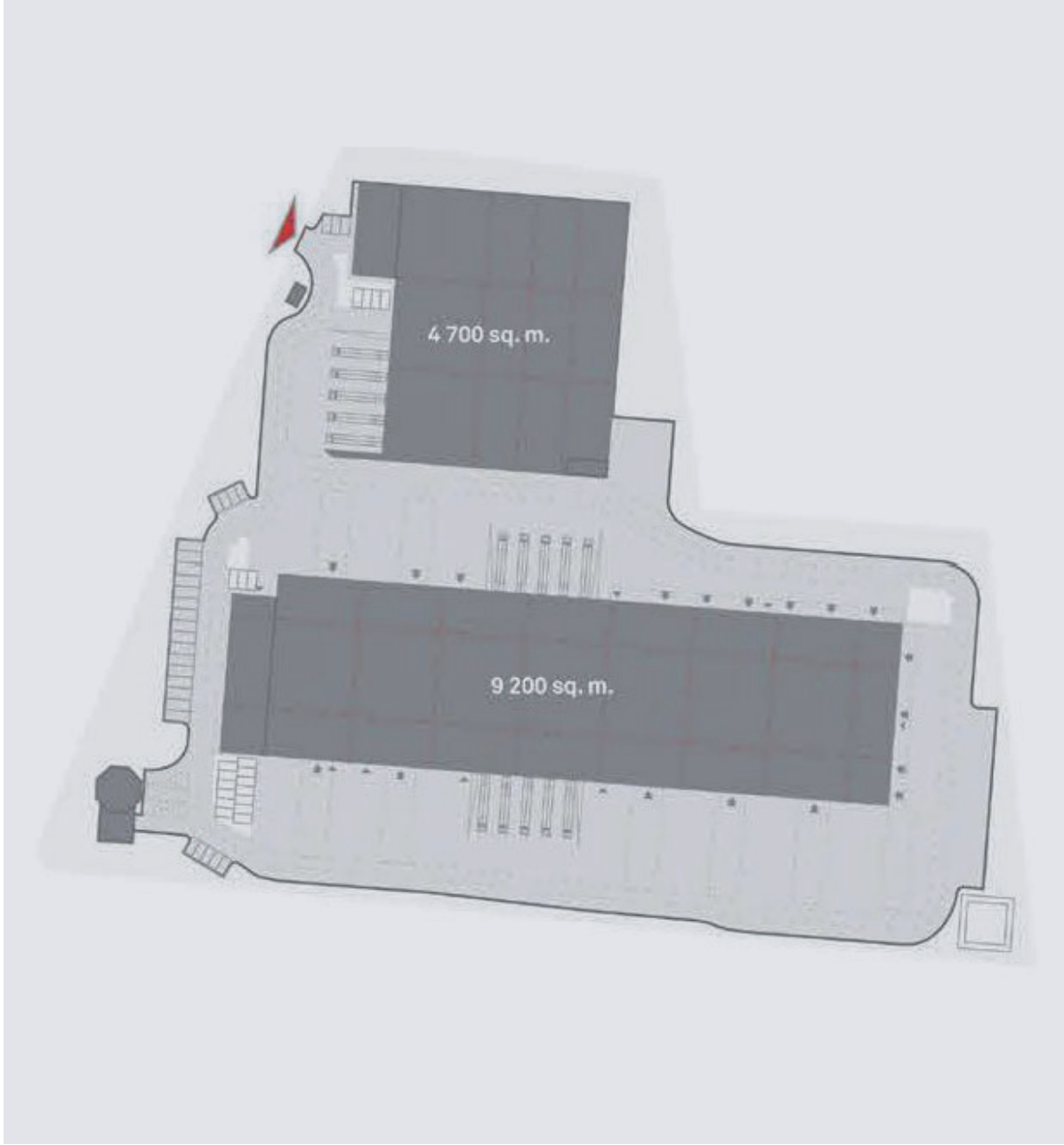


RZESZÓW

- 2 Storey Offices
- 1 Office Cladding Colour
- Standard Office Width
- Outboard Offices



WARSAW
BRONISZE



16

SPAIN

- Guadalajara
- Illescas
- Valls



GUADALAJARA

- 2 Storey Offices
- 2 Office Cladding Colours
- Standard Office Width
- Mid Office Main Entrance



ILLESCAS

- 2 Storey Offices
- 2 Office Cladding Colours
- Standard Office Width
- End Office Main Entrance



VALLS

- 2 Storey Offices
- 2 Office Cladding Colours
- Standard Office Width
- Mid Office Main Entrance



CONTACT

United Kingdom

50 New Bond Street,
London, W1S 1BJ,
United Kingdom

contact-uk@glp.com
+44 020 7901 4455

Northern Europe

Taunusanlage 1 — Skyper, 18.
OG 60329 Frankfurt am
Main, Germany

contact-de@glp.com
+49 0 69 256 129 9-0

Southern Europe

36 Rue Marbeuf,
75008 Paris,
France

contact-fr@glp.com
+33 01 44 43 49 50

This brochure, the descriptions and measurements contained herein do not form part of any contract and, whilst every effort has been made to ensure accuracy, this cannot be guaranteed. This brochure is printed on part-recycled stock and is not laminated to allow future recycling.





glp.com/eu