

Italy

# G-Park Tavazzano

14,476 SQM

Available March 2027

Enquire about this property



Luca Barreca

Principal - Real Estate Management  
Italy

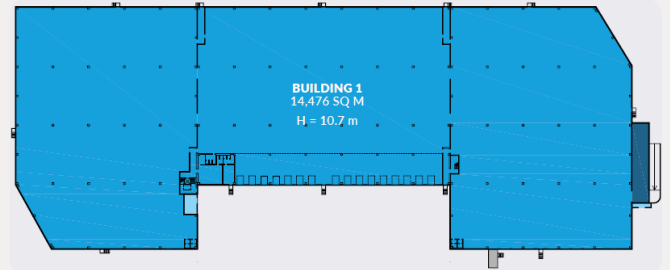
+39 347 5260173

We are offering a modern logistics property for lease in Tavazzano, strategically located near the main transport routes in Lombardy. The total area is 14,476 square metres, of which 719 square metres are dedicated to functional and bright offices.

The property enjoys excellent accessibility: Tavazzano is about 27 km from Milan, while the Melegnano A1 motorway exit is only 7 km from the property. Thanks also to its proximity to the outer ring road (TEM), the area is considered strategic from a logistical point of view.

The warehouse offers spacious, modular spaces suitable for advanced logistics and distribution activities, ensuring high operating standards in a dynamic and well-connected environment.

An ideal solution for operators seeking quality, efficiency and maximum accessibility in the heart of the Lombardy logistics market.



### TOTAL BUILDING SIZE

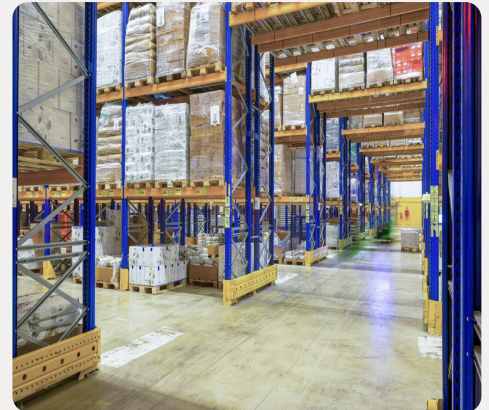
14,476 SQ M

### TOTAL AVAILABLE

14,476 SQ M

### ADDRESS

Via Ettore Majorana, 2, Tavazzano con Villavesco,  
Province of Lodi, Italy



VIEW FULL DETAILS OF THIS PROPERTY AT  
[HTTPS://EU.GLP.COM/PROPERTY/G-PARK-TAVAZZANO/](https://eu.glp.com/property/g-park-tavazzano/)