

Italy

G-Park Massalengo

36,753 SQM

Available Q1 2027

Enquire about this property



Luca Barreca

Principal - Real Estate Management

Italy

+39 347 5260173

Located in the heart of one of Lombardy's most dynamic logistics hubs, the Massalengo logistics park offers a modern, efficient and fully equipped solution for distribution and goods handling activities.

The property has a total of 36,755 square metres available for lease, divided into two independent buildings:

Building 1: 22,597 square metres

Building 2: 14,158 square metres

The property is strategically located, with direct access to the A1 motorway, 35 km from Milan and major Italian cities such as Bologna and Rome.

Its strategic location, a short distance from Lodi and with quick access to major roads, makes the property ideal for logistics operators, couriers and companies looking for a distribution platform in southern Lombardy.

TOTAL BUILDING SIZE

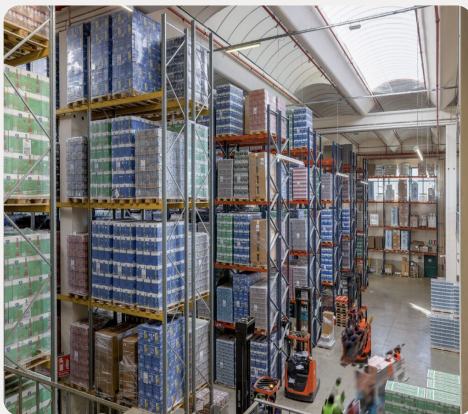
36,755 SQ M

TOTAL AVAILABLE

36,753 SQ M

ADDRESS

Via delle Industrie, 6, Massalengo, Province of Lodi, Italy



VIEW FULL DETAILS OF THIS PROPERTY AT
[HTTPS://EU.GLP.COM/PROPERTY/G-PARK-MASSALENGO/](https://eu.glp.com/property/g-park-massalengo/)