

Włochy

G-Park Arese

23,028 SQM

Disponibile gennaio 2027

Zapytaj o tę nieruchomość



Luca Barreca

Principal - Real Estate Management

Italy

Włochy

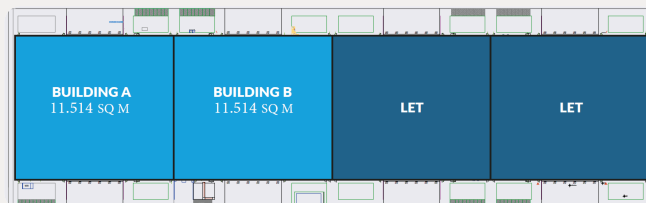
+39 347 5260173

Strategically located in the Milan hinterland, G-Park Arese offers an ideal combination of efficiency, accessibility and modernity. With a total area of 23,028 square metres, the asset is designed to support advanced logistics activities thanks to its functional and high-performance layout.

The facility has 24 loading bays, large manoeuvring areas and modern, flexible offices, ideal for administrative and operational functions. The property also has 225 parking spaces, ensuring comfort and capacity for staff, visitors and operational vehicles.

Perfectly connected to the main motorways and a short distance from Milan, the property is an ideal solution for logistics operators, e-commerce businesses and companies that need an efficient and strategic hub within the Milan metropolitan area.

Height under beam: 10.5 metres

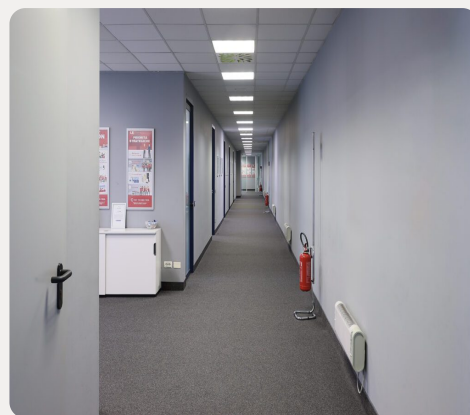
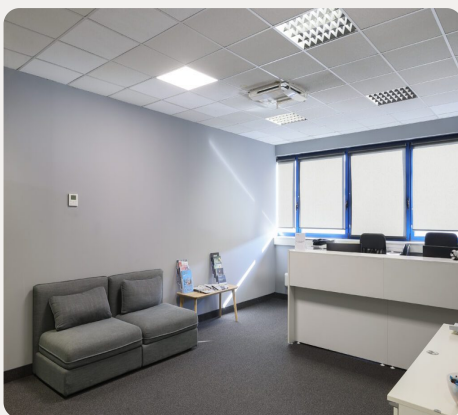


CAŁKOWITA POWIERZCHNIA BUDYNKU

23,028 mkw

DOSTĘPNA POWIERZCHNIA

23,028 mkw



ZOBACZ PEŁNE SZCZEGÓŁY TEJ NIERUCHOMOŚCI NA
[HTTPS://EU.GLP.COM/PL/NIERUCHOMO%C5%9BCI/G-PARK-ARESE-2/](https://eu.glp.com/pl/nieruchomo%C5%9BCI/g-park-arese-2/)