

Italië

G-Park Gropello Cairoli

16,800 SQM

Available now

Voor meer informatie over dit pand



Luca Barreca

Principal - Real Estate Management

Italy

Italië

+39 347 5260173

Overview

G-PARK Gropello Cairoli is a state-of-the-art logistics center capable of responding to the latest market demands. The location covers an area of 37,670 square meters, of which 35,770 are used for warehousing with 29 loading bays, a 12-meter-high stacking area, and a floor load capacity of 5,500 kg/sqm.

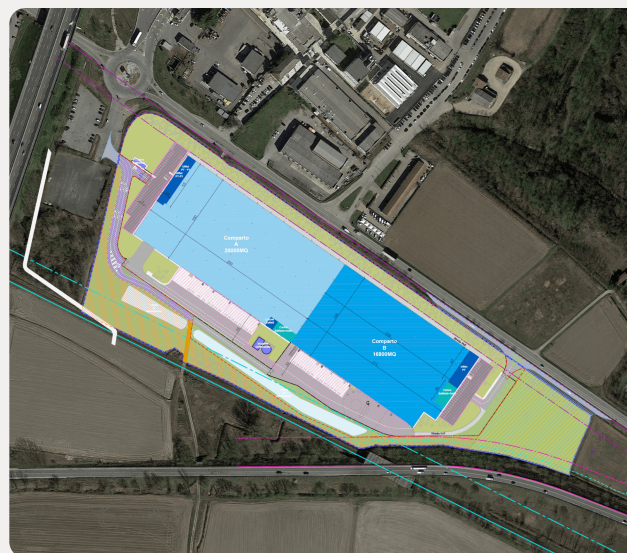
The property is divided into two sections.

Section B – 16,800 square meters – is available for lease.

In compartment B, the offices are spread over a single level and cover an area of 480 sqm. There will also be charging points for electric cars and bikes.

ESG

The G-Park Gropello building is constructed to the highest quality and sustainability standards guaranteed by BREEAM Excellent certification and has all the necessary features to operate in a constantly evolving key market.



TOTALE GEBOUWGROOTTE

37,670 SQ M

TOTAAL BESCHIKBAAR

16,800 SQ M

ADRES

V. Pavia, 1, 27027 Gropello Cairoli PV, Italy



BEKIJK DE VOLLEDIGE DETAILS VAN DEZE EIGENSCHAP OP
[HTTPS://EU.GLP.COM/NL/EIGENSCHAPPEN/G-PARK-GROPELLO-CAIROLI/](https://eu.glp.com/nl/eigenschappen/g-park-gropello-cairoli/)