

Polen

Warsaw VI Logistics Centre

37,415 SQM

KEY FEATURES

- BREEAM Excellent
- Solarmodule
- Ladestationen für Elektrofahrzeuge
- LKW-Parkplätze
- Sicherheit
- Pförtnerhaus
- LED-Beleuchtung
- Verkehrsanbindung
- Natürliches Licht
- Baumpflanzungen
- Ebener Zugang
- Kosteneffizient
- Gepflegt
- Fahrradunterstände
- Dach PV-bereit
- Dachfenster
- Wärmepumpen
- Intelligente Zähler

Anfragen zu dieser Immobilie



Magdalena Górska-Wojtas

Vice President, Real Estate Asset Management

mgorska-wojtas@marqlogistics.com

Polen

+48 22 222 21 00

Warehouse for rent in Warsaw – GLP Warsaw VI Logistics Centre

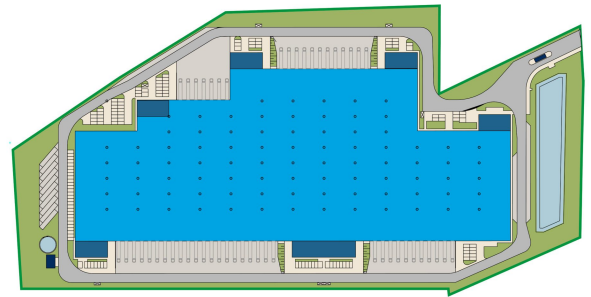
GLP Warsaw VI Logistics Centre is a modern logistics complex located in Stary Konik, right next to the A2 motorway and the eastern borders of Warsaw. With direct access to the A2 motorway and excellent connections to the city centre, Lublin, and Łódź, the facility ensures exceptionally efficient national and international distribution. It is an ideal location for logistics, e-commerce, and manufacturing companies that need modern space with convenient access to key markets in Poland and Europe. The combination of a strategic location and high technical standards makes the centre a strong operational hub for growing businesses.

37,000 m² of flexible warehouse space

The building offers 37,415 m² of modern usable space, including 54 loading docks, four ground-level doors, and a storage height of up to 12 metres. Its high floor load capacity and customizable layout make it perfectly suited for storing a wide range of goods and supporting light production. The advanced infrastructure allows smooth logistics operations and helps reduce transport and maintenance costs. An additional advantage of the location is the excellent availability of skilled labour within the Warsaw metropolitan area.

Modernity and Sustainability

GLP Warsaw VI Logistics Centre meets the highest standards of sustainable construction, as confirmed by its BREEAM Excellent certification. The building is equipped with heat pumps, energy-efficient LED lighting, a smart metering system, photovoltaic panel installation. These features reduce energy and water consumption while minimizing the building's environmental impact. This is a future-ready investment for companies that value efficiency, innovation, and environmental responsibility.



GESAMTGEBÄUDEFLÄCHE

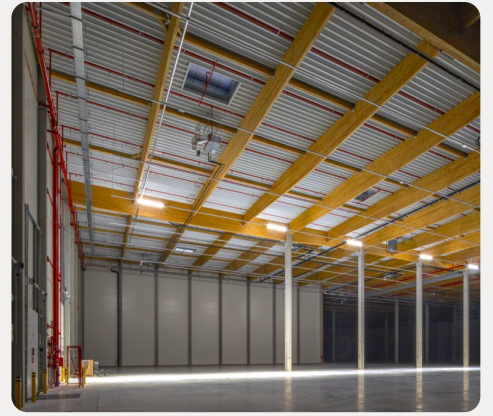
37,415 SQ M

GESAMT VERFÜGBAR

37,415 SQ M

ADRESSE

683Q+R3 Stary Konik, Poland



VOLLSTÄNDIGE DETAILS DIESER IMMOBILIE UNTER
[HTTPS://EU.GLP.COM/DE/EIGENSCHAFTEN/WARSAW-VI-LOGISTICS-CENTRE/](https://eu.glp.com/de/eigenschaften/warsaw-vi-logistics-centre/)